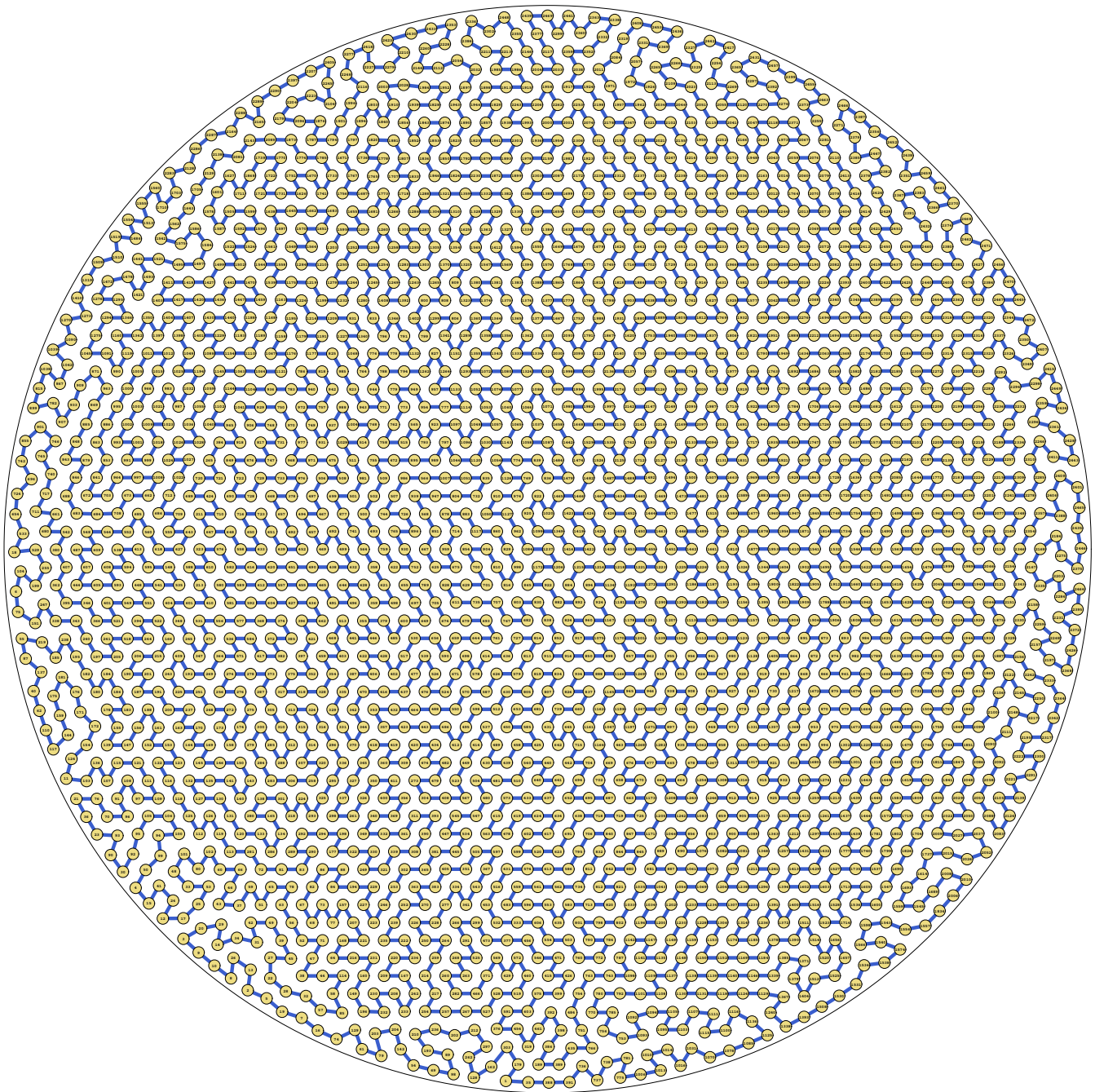


# $24\frac{1}{2}$ circles in a circle



<b>radius</b>	<b>=</b>	<b>0.018860605449</b>	<b>density</b>	<b>=</b>	<b>0.879345866515</b>
<b>ratio</b>	<b>=</b>	<b>53.020567271462</b>	<b>length</b>	<b>=</b>	<b>93.317602</b>

© E. SPECHT  
01-JUN-2014