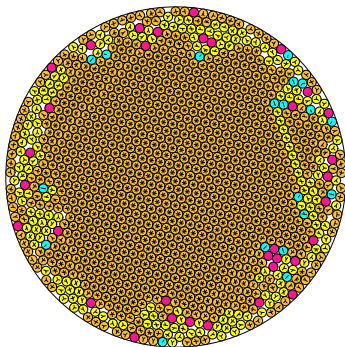


N = 1201

1201 circles in a circle

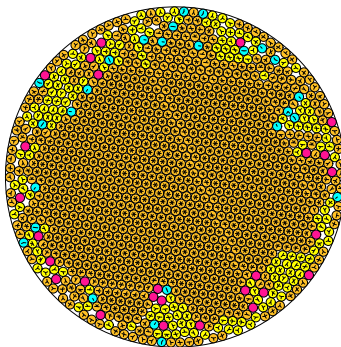


radius = 0.026932514363 density = 0.871157756219
ratio = 37.129841890205 contacts = 2978

© R. Drost
20-09-2014

N = 1202

1202 circles in a circle

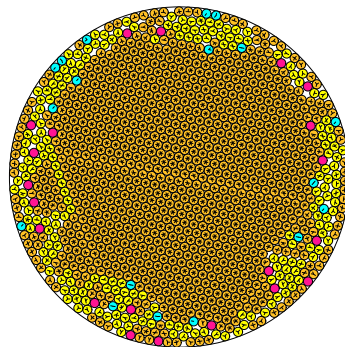


radius = 0.026919234636 density = 0.871023522460
ratio = 37.148138687191 contacts = 2949

© R. Drost
20-09-2014

N = 1203

1203 circles in a circle

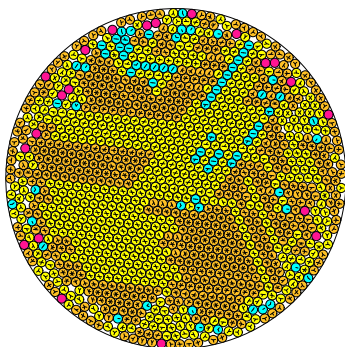


radius = 0.026908001688 density = 0.871020787461
ratio = 37.163664466305 contacts = 3018

© R. Drost
20-09-2014

N = 1204

1204 circles in a circle

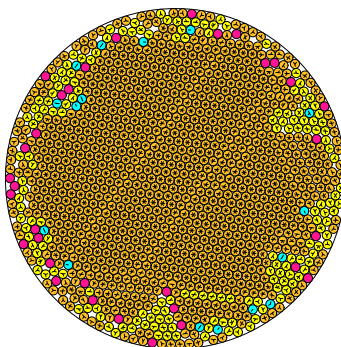


radius = 0.026890559384 density = 0.870615029495
ratio = 37.187772323094 contacts = 2432

© R. Drost
20-09-2014

N = 1205

1205 circles in a circle

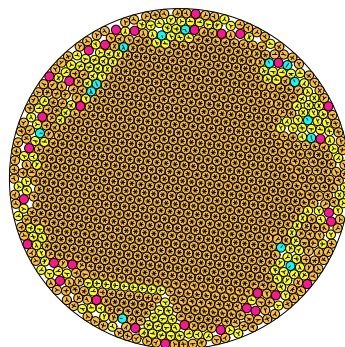


radius = 0.026880364337 density = 0.870677567156
ratio = 37.201876433830 contacts = 2937

© R. Drost
20-09-2014

N = 1206

1206 circles in a circle

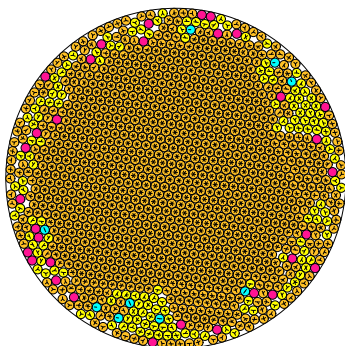


radius = 0.026888650477 density = 0.869992849139
ratio = 37.231950546266 contacts = 3005

© R. Drost
20-09-2014

N = 1207

1207 circles in a circle

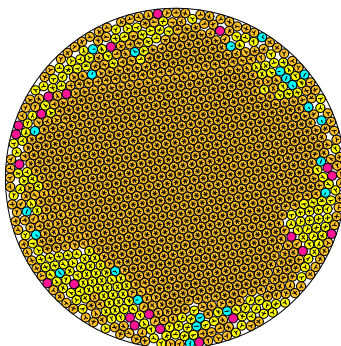


radius = 0.026850313301 density = 0.870173764516
ratio = 37.243513279846 contacts = 3031

© R. Drost
20-09-2014

N = 1208

1208 circles in a circle

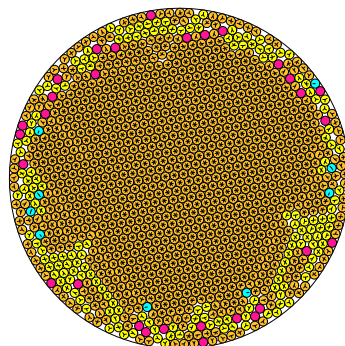


radius = 0.026837684314 density = 0.870075649624
ratio = 37.261038928929 contacts = 3010

© R. Drost
20-09-2014

N = 1209

1209 circles in a circle

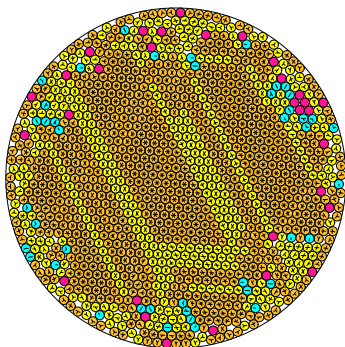


radius = 0.026824258864 density = 0.869924902814
ratio = 37.279687979698 contacts = 3044

© R. Drost
20-09-2014

N = 1210

1210 circles in a circle

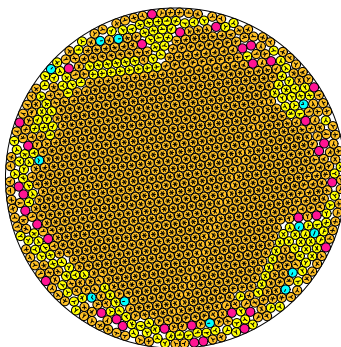


radius = 0.026831912936 density = 0.871141377678
ratio = 37.269053547874 contacts = 2653

© R. Drost
20-09-2014

N = 1211

1211 circles in a circle

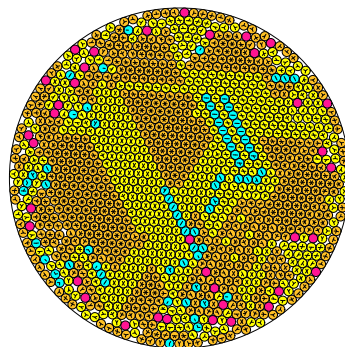


radius = 0.026799619637 density = 0.869763950975
ratio = 37.313962413991 contacts = 3002

© R. Drost
20-09-2014

N = 1212

1212 circles in a circle



radius = 0.026803452760 density = 0.870731196769
ratio = 37.308626204407 contacts = 2483

© R. Drost
20-09-2014