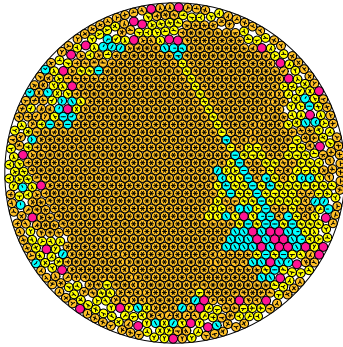


N = 1297

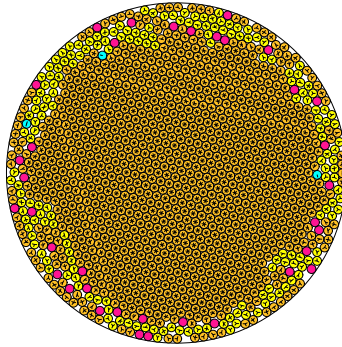
1297 circles in a circle



radius = 0.025917237533 density = 0.871199052161
ratio = 38.584359105213 contacts = 2955

N = 1298

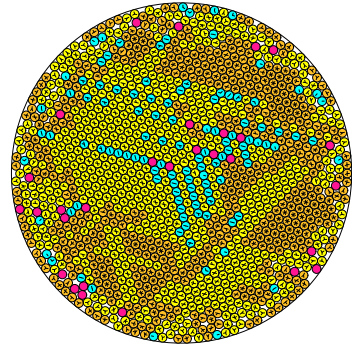
1298 circles in a circle



radius = 0.025907213785 density = 0.871196476505
ratio = 38.599287761481 contacts = 3263

N = 1299

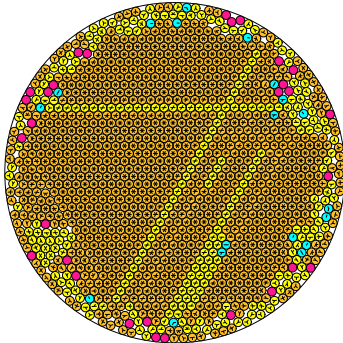
1299 circles in a circle



radius = 0.025894168360 density = 0.870989833609
ratio = 38.618733998421 contacts = 2497

N = 1300

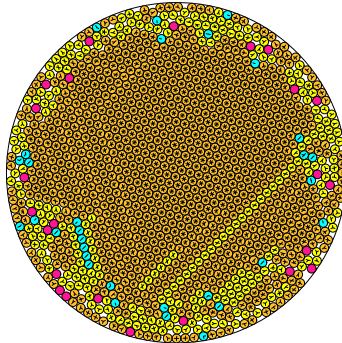
1300 circles in a circle



radius = 0.025903536989 density = 0.87229195098
ratio = 38.604766660772 contacts = 3114

N = 1301

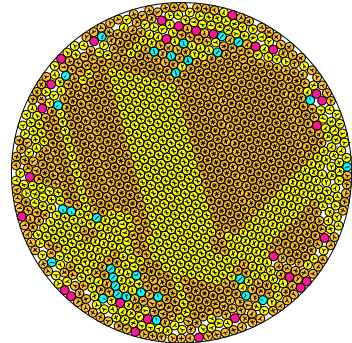
1301 circles in a circle



radius = 0.025881853372 density = 0.871508038949
ratio = 38.63960110260 contacts = 3090

N = 1302

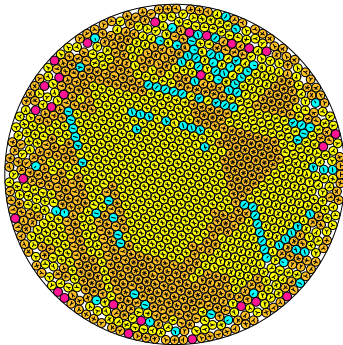
1302 circles in a circle



radius = 0.025876133527 density = 0.871785747727
ratio = 38.645649415558 contacts = 2799

N = 1303

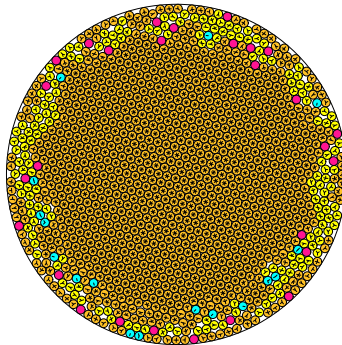
1303 circles in a circle



radius = 0.025873765079 density = 0.872295590311
ratio = 38.649187582777 contacts = 2507

N = 1304

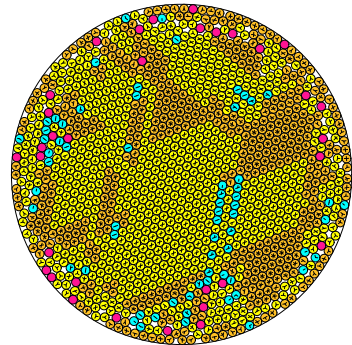
1304 circles in a circle



radius = 0.025868044584 density = 0.872579072728
ratio = 38.657734516344 contacts = 3322

N = 1305

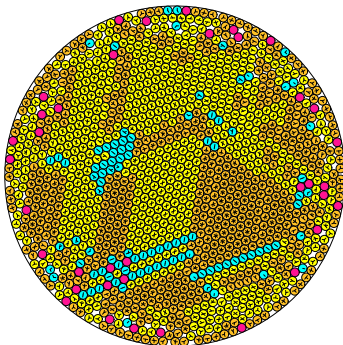
1305 circles in a circle



radius = 0.025859242028 density = 0.872654019756
ratio = 38.670893713893 contacts = 2583

N = 1306

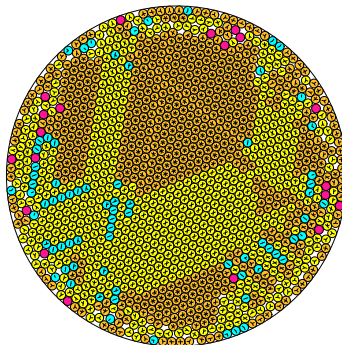
1306 circles in a circle



radius = 0.025846990169 density = 0.872495372425
ratio = 38.68924635361 contacts = 2542

N = 1307

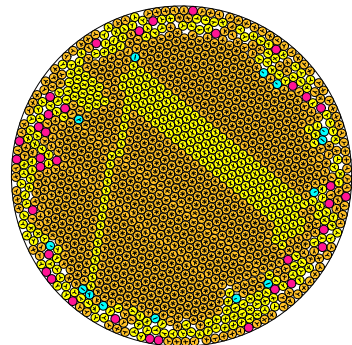
1307 circles in a circle



radius = 0.025838641514 density = 0.872600812458
ratio = 38.701693511391 contacts = 2748

N = 1308

1308 circles in a circle



radius = 0.025829359885 density = 0.872639828349
ratio = 38.715632305663 contacts = 3043