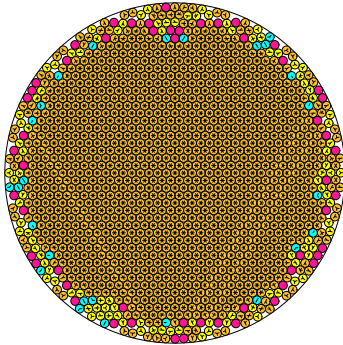


N = 1357

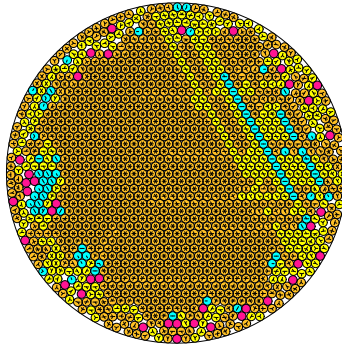
1357 circles in a circle



radius = 0.025370824096 density = 0.873472016688
 ratio = 39.415353466714 contacts = 3453

N = 1358

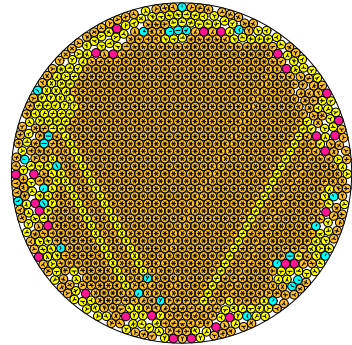
1358 circles in a circle



radius = 0.025367159163 density = 0.873863173498
 ratio = 39.421048040230 contacts = 3084

N = 1359

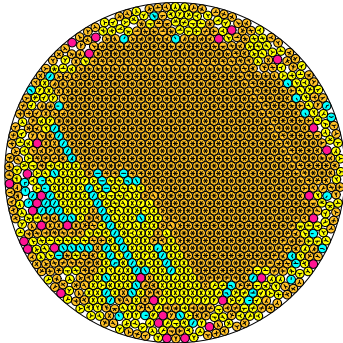
1359 circles in a circle



radius = 0.025351380893 density = 0.873419125442
 ratio = 39.445583031791 contacts = 3294

N = 1360

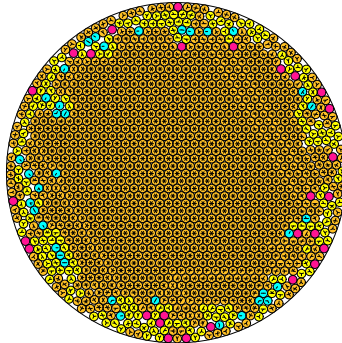
1360 circles in a circle



radius = 0.025336791717 density = 0.873056099750
 ratio = 39.468296190066 contacts = 3097

N = 1361

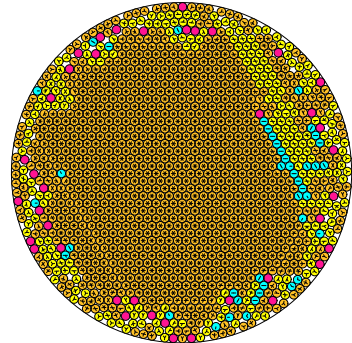
1361 circles in a circle



radius = 0.025327137949 density = 0.873032390630
 ratio = 39.483340044309 contacts = 3372

N = 1362

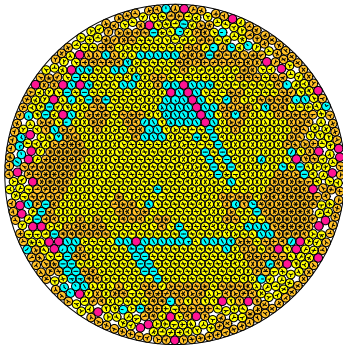
1362 circles in a circle



radius = 0.025320504253 density = 0.873245217235
 ratio = 39.493023164903 contacts = 3317

N = 1363

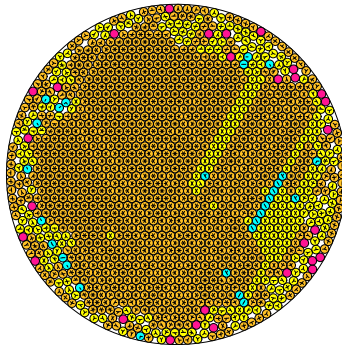
1363 circles in a circle



radius = 0.025305595680 density = 0.872828696520
 ratio = 39.516950206171 contacts = 2455

N = 1364

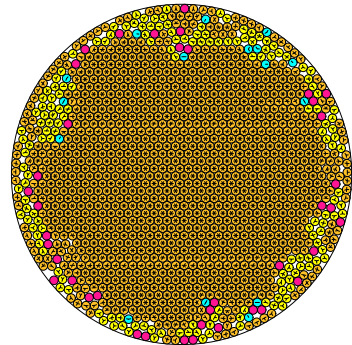
1364 circles in a circle



radius = 0.025269250225 density = 0.870961749467
 ratio = 39.573789926111 contacts = 3160

N = 1365

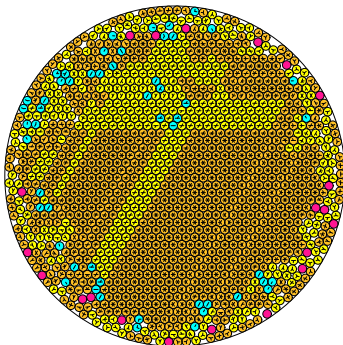
1365 circles in a circle



radius = 0.025258441918 density = 0.870854832324
 ratio = 39.590723894499 contacts = 3446

N = 1366

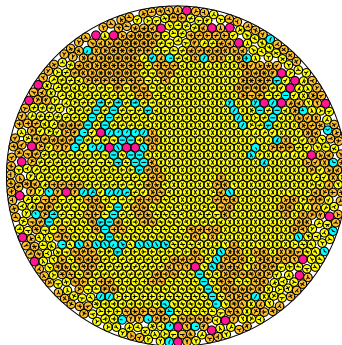
1366 circles in a circle



radius = 0.02524999093 density = 0.871285261554
 ratio = 39.596121002681 contacts = 3045

N = 1367

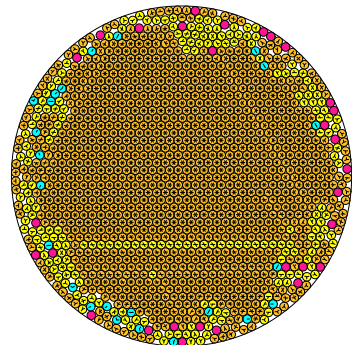
1367 circles in a circle



radius = 0.025273876332 density = 0.871196983562
 ratio = 39.566546376381 contacts = 2358

N = 1368

1368 circles in a circle



radius = 0.025260978767 density = 0.872944122050
 ratio = 39.586747972508 contacts = 3395