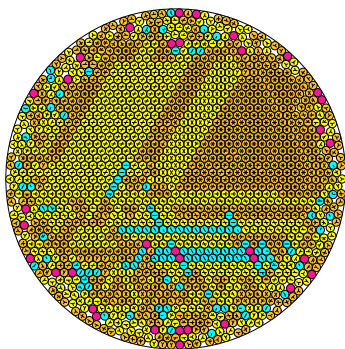


N = 1489

1489 circles in a circle

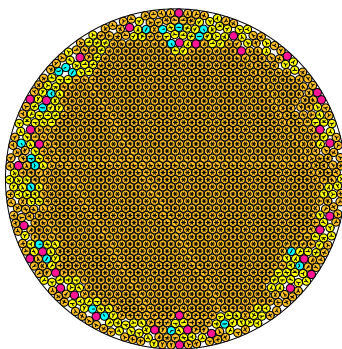


radius = 0.024246135500 density = 0.875346004095
ratio = 41.243686029364 contacts = 2963

© R. Drost
12-Nov-2014

N = 1490

1490 circles in a circle

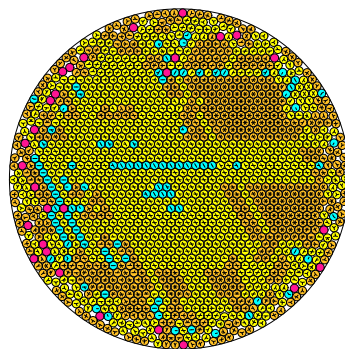


radius = 0.024235439046 density = 0.875161193539
ratio = 41.261889174793 contacts = 3739

© R. Drost
12-Nov-2014

N = 1491

1491 circles in a circle

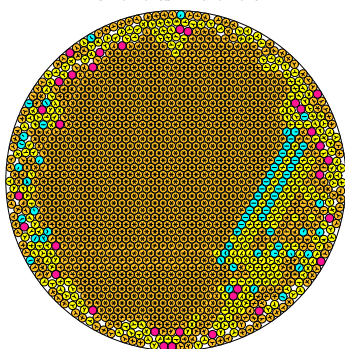


radius = 0.024230515963 density = 0.875392794610
ratio = 41.270272640092 contacts = 2929

© R. Drost
12-Nov-2014

N = 1492

1492 circles in a circle

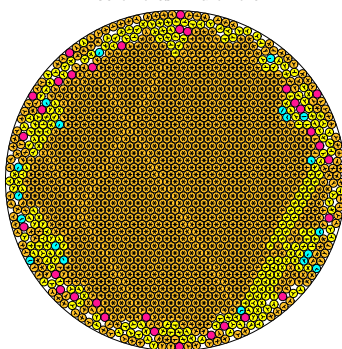


radius = 0.024218701226 density = 0.875125869691
ratio = 41.290405735327 contacts = 3600

© R. Drost
12-Nov-2014

N = 1493

1493 circles in a circle

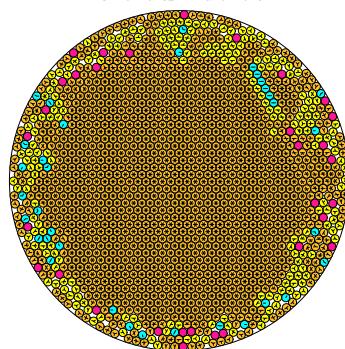


radius = 0.0242144025178 density = 0.875403211377
ratio = 41.297697245773 contacts = 3717

© R. Drost
12-Nov-2014

N = 1494

1494 circles in a circle

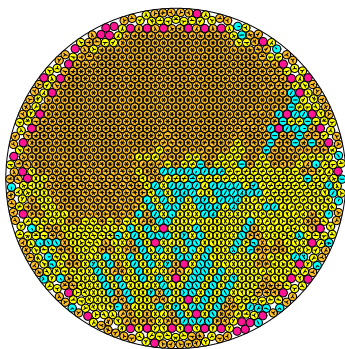


radius = 0.024200999105 density = 0.875018406390
ratio = 41.320608114248 contacts = 3747

© R. Drost
12-Nov-2014

N = 1495

1495 circles in a circle

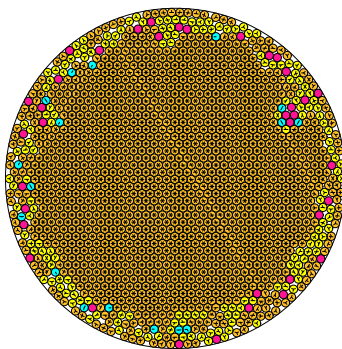


radius = 0.024203077885 density = 0.8757548523739
ratio = 41.317059126388 contacts = 3636

© R. Drost
12-Nov-2014

N = 1496

1496 circles in a circle

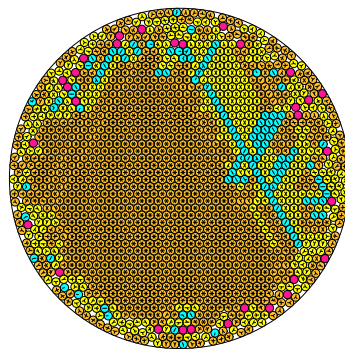


radius = 0.024188219061 density = 0.875264632238
ratio = 41.342440197205 contacts = 3826

© R. Drost
12-Nov-2014

N = 1497

1497 circles in a circle

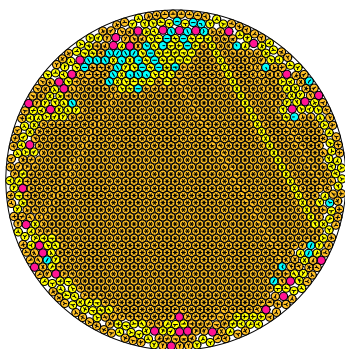


radius = 0.024171508774 density = 0.874639969085
ratio = 41.371021120901 contacts = 3408

© R. Drost
12-Nov-2014

N = 1498

1498 circles in a circle

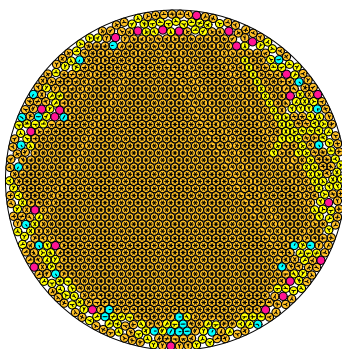


radius = 0.024168598471 density = 0.875013485744
ratio = 41.376002863127 contacts = 3679

© R. Drost
12-Nov-2014

N = 1499

1499 circles in a circle

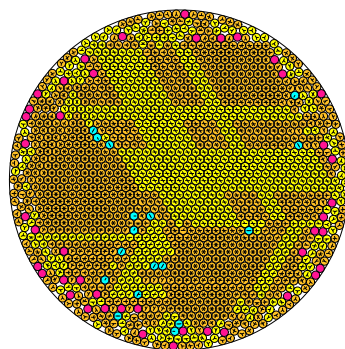


radius = 0.024160887159 density = 0.875038953986
ratio = 41.389208658811 contacts = 3760

© R. Drost
12-Nov-2014

N = 1500

1500 circles in a circle



radius = 0.024147191419 density = 0.874630280123
ratio = 41.412683680549 contacts = 3220

© R. Drost
12-Nov-2014