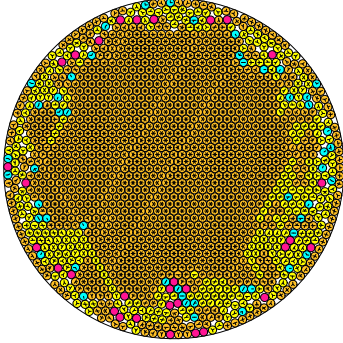


N = 1513

1513 circles in a circle

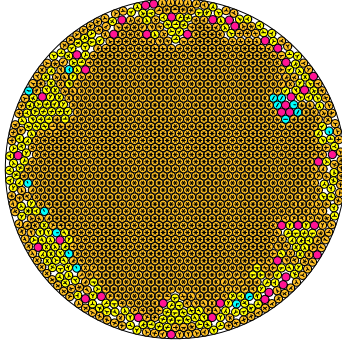


radius = 0.024017211919 density = 0.872738446606
ratio = 41.636806278237 contacts = 3589

© R. Bostett
21-04-2014

N = 1514

1514 circles in a circle

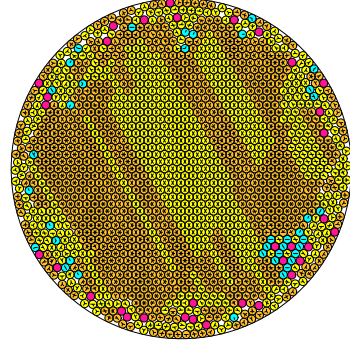


radius = 0.024011916572 density = 0.872930216124
ratio = 41.645988440649 contacts = 3818

© R. Bostett
21-04-2014

N = 1515

1515 circles in a circle

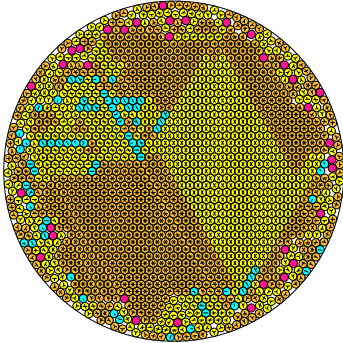


radius = 0.024009290312 density = 0.873315722218
ratio = 41.650543894554 contacts = 3201

© R. Bostett
21-04-2014

N = 1516

1516 circles in a circle

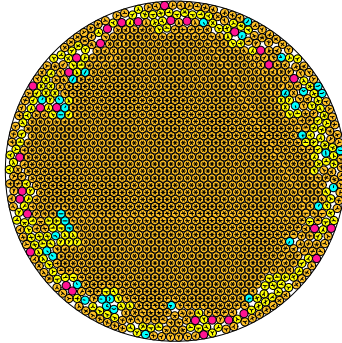


radius = 0.024003489261 density = 0.873469925008
ratio = 41.660609802299 contacts = 3243

© R. Bostett
21-04-2014

N = 1517

1517 circles in a circle

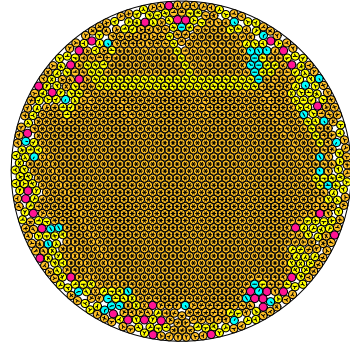


radius = 0.024001136044 density = 0.873876181973
ratio = 41.664609708042 contacts = 3820

© R. Bostett
21-04-2014

N = 1518

1518 circles in a circle

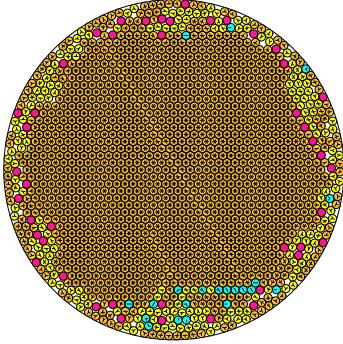


radius = 0.023991501947 density = 0.873748907457
ratio = 41.681423407390 contacts = 3698

© R. Bostett
21-04-2014

N = 1519

1519 circles in a circle

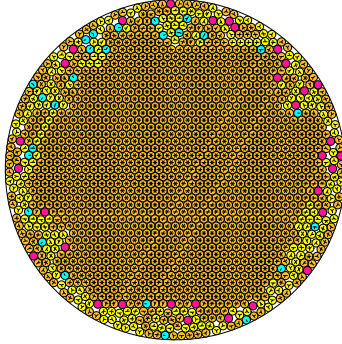


radius = 0.023987214182 density = 0.874012008738
ratio = 41.688876099795 contacts = 3861

© R. Bostett
21-04-2014

N = 1520

1520 circles in a circle

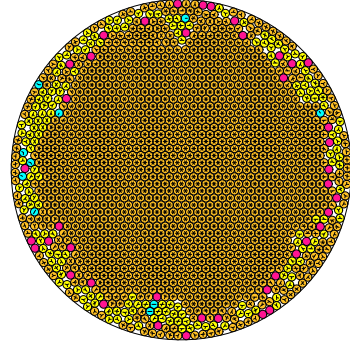


radius = 0.023972534724 density = 0.873517280044
ratio = 41.714404067966 contacts = 3795

© R. Bostett
21-04-2014

N = 1521

1521 circles in a circle

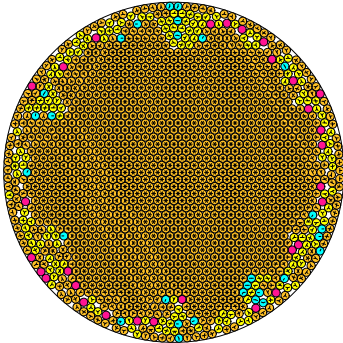


radius = 0.023962567729 density = 0.873365275959
ratio = 41.731754764413 contacts = 3916

© R. Bostett
21-04-2014

N = 1522

1522 circles in a circle

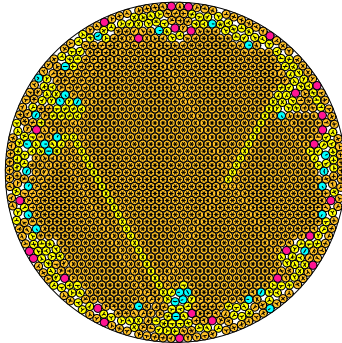


radius = 0.023956232897 density = 0.873477465969
ratio = 41.742790042147 contacts = 3817

© R. Bostett
21-04-2014

N = 1523

1523 circles in a circle

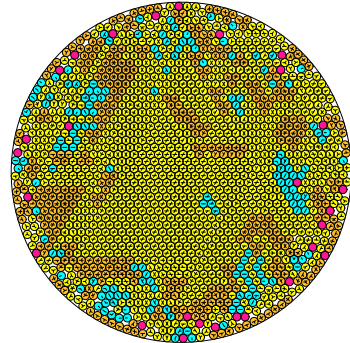


radius = 0.023949669503 density = 0.873572497378
ratio = 41.754229629670 contacts = 3740

© R. Bostett
21-04-2014

N = 1524

1524 circles in a circle



radius = 0.023941058128 density = 0.873517578767
ratio = 41.769248236991 contacts = 2802

© R. Bostett
21-04-2014