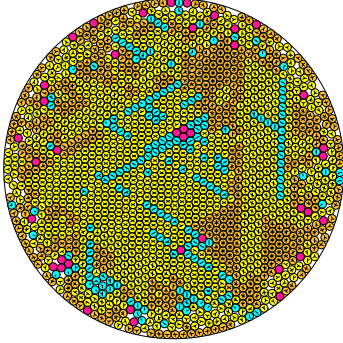


N = 1549

1549 circles in a circle

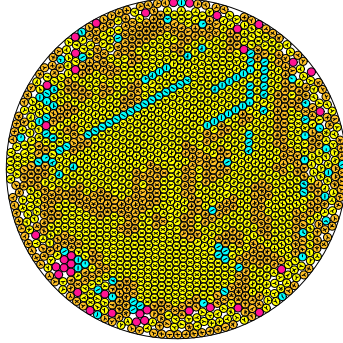


radius = 0.023757153008 density = 0.874259192197
ratio = 42.092585743167 contacts = 2874

© R. Bostel
21-09-2014

N = 1550

1550 circles in a circle

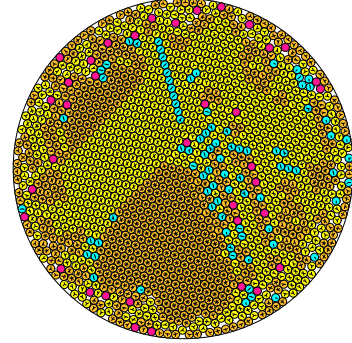


radius = 0.023749596835 density = 0.874267192262
ratio = 42.105977921591 contacts = 2915

© R. Bostel
21-09-2014

N = 1551

1551 circles in a circle

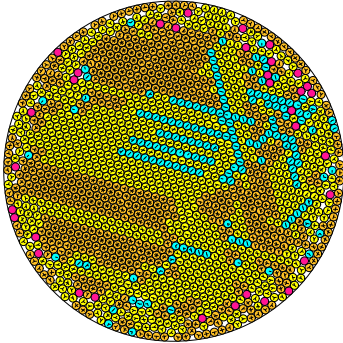


radius = 0.023742752995 density = 0.874327113960
ratio = 42.118114955862 contacts = 3142

© R. Bostel
21-09-2014

N = 1552

1552 circles in a circle

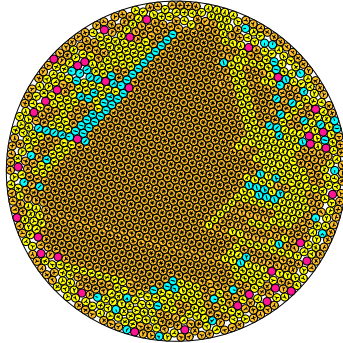


radius = 0.023739508093 density = 0.874651707447
ratio = 42.123871989687 contacts = 3013

© R. Bostel
21-09-2014

N = 1553

1553 circles in a circle

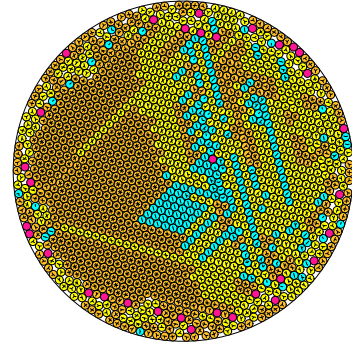


radius = 0.023734071018 density = 0.874814415332
ratio = 42.133521898150 contacts = 3440

© R. Bostel
21-09-2014

N = 1554

1554 circles in a circle

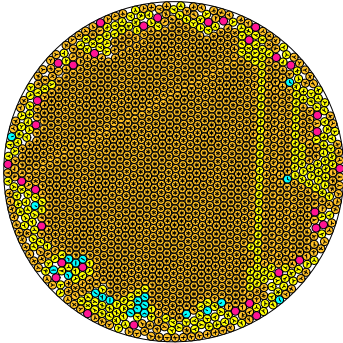


radius = 0.023727132883 density = 0.874866001373
ratio = 42.145842269248 contacts = 3122

© R. Bostel
21-09-2014

N = 1555

1555 circles in a circle

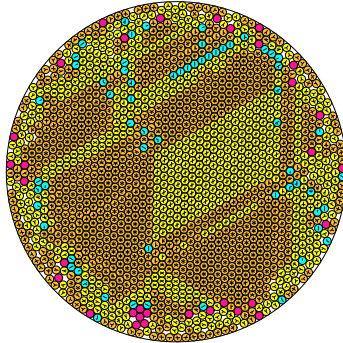


radius = 0.023718981334 density = 0.874827700191
ratio = 42.160323415428 contacts = 3867

© R. Bostel
21-09-2014

N = 1556

1556 circles in a circle

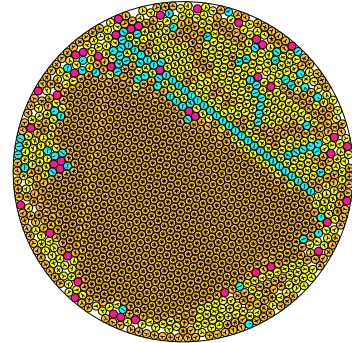


radius = 0.023711608717 density = 0.874846043613
ratio = 42.173435465920 contacts = 3356

© R. Bostel
21-09-2014

N = 1557

1557 circles in a circle

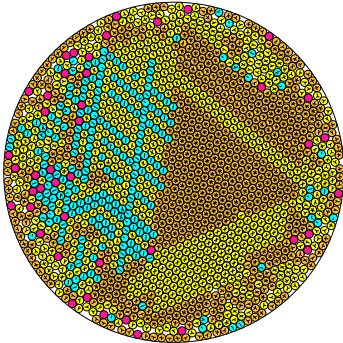


radius = 0.023694843149 density = 0.874170786484
ratio = 42.203275781654 contacts = 3545

© R. Bostel
21-09-2014

N = 1558

1558 circles in a circle

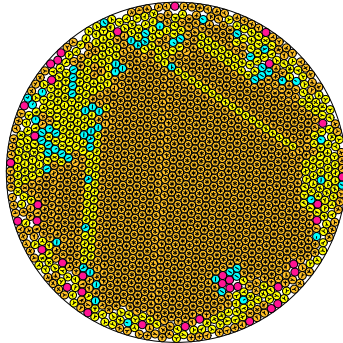


radius = 0.023693853724 density = 0.874659181321
ratio = 42.205038134834 contacts = 3024

© R. Bostel
21-09-2014

N = 1559

1559 circles in a circle

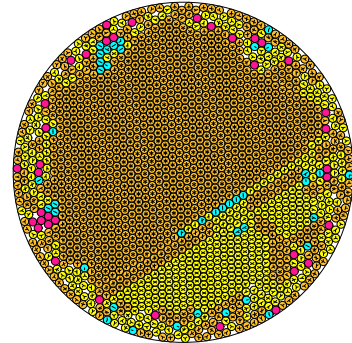


radius = 0.023681748023 density = 0.874326470334
ratio = 42.226612622388 contacts = 3653

© R. Bostel
21-09-2014

N = 1560

1560 circles in a circle



radius = 0.023676154147 density = 0.874474029303
ratio = 42.236589345961 contacts = 3705

© R. Bostel
21-09-2014