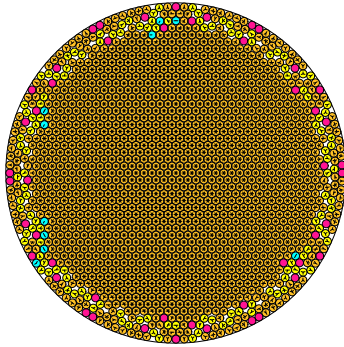


N = 1597

1597 circles in a circle

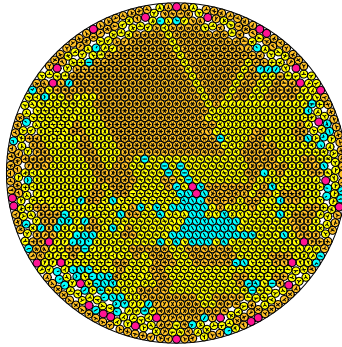


radius = 0.023435429177 density = 0.877103287084
ratio = 42.670436818729 contacts = 4175

© R. Drost
19-09-2014

N = 1598

1598 circles in a circle

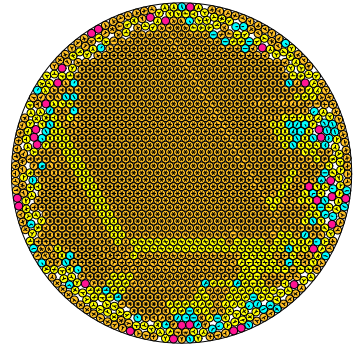


radius = 0.023419453905 density = 0.876456372326
ratio = 42.699543893584 contacts = 3166

© R. Drost
19-09-2014

N = 1599

1599 circles in a circle

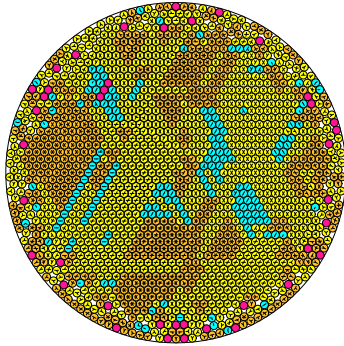


radius = 0.023412821508 density = 0.876508177359
ratio = 42.711639844183 contacts = 3723

© R. Drost
19-09-2014

N = 1600

1600 circles in a circle

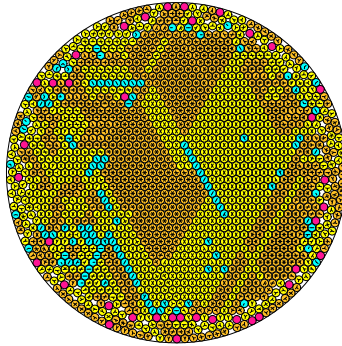


radius = 0.023398725671 density = 0.87600580843
ratio = 42.737370148296 contacts = 3032

© R. Drost
19-09-2014

N = 1601

1601 circles in a circle

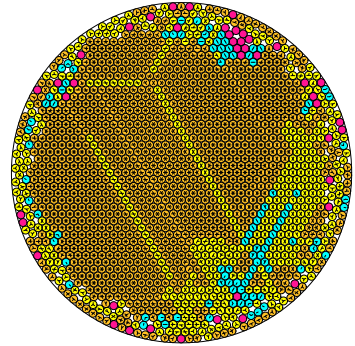


radius = 0.023394087936 density = 0.876200643921
ratio = 42.745842570848 contacts = 3235

© R. Drost
19-09-2014

N = 1602

1602 circles in a circle

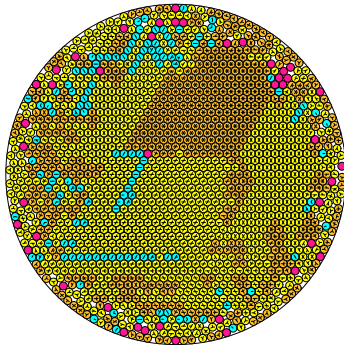


radius = 0.023387010857 density = 0.876217547440
ratio = 42.758777773446 contacts = 3653

© R. Drost
19-09-2014

N = 1603

1603 circles in a circle

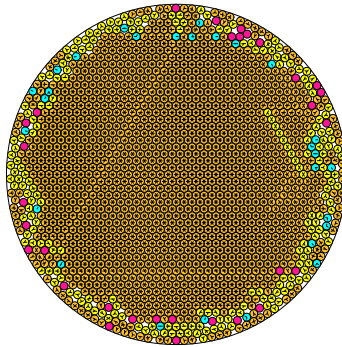


radius = 0.023373627458 density = 0.875761316267
ratio = 42.783260826325 contacts = 3113

© R. Drost
19-09-2014

N = 1604

1604 circles in a circle

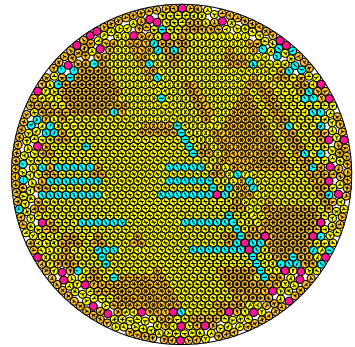


radius = 0.023363687603 density = 0.875562485056
ratio = 42.801462551168 contacts = 4083

© R. Drost
19-09-2014

N = 1605

1605 circles in a circle

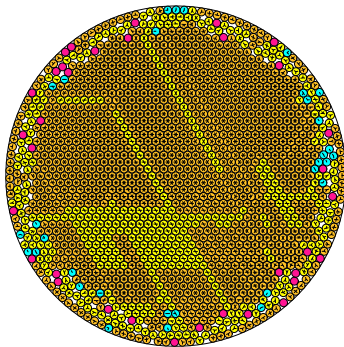


radius = 0.023361713780 density = 0.875960321542
ratio = 42.805078831694 contacts = 3050

© R. Drost
19-09-2014

N = 1606

1606 circles in a circle

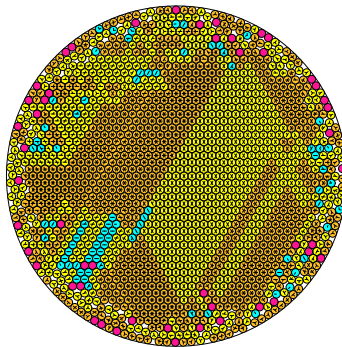


radius = 0.023359613742 density = 0.87648516031
ratio = 42.808927023854 contacts = 3754

© R. Drost
19-09-2014

N = 1607

1607 circles in a circle

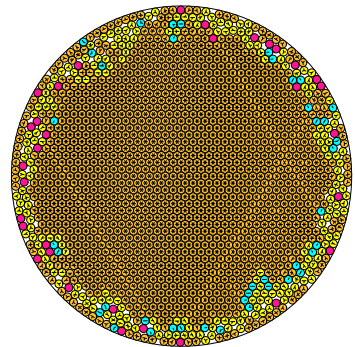


radius = 0.023351539338 density = 0.876288083843
ratio = 42.823729328136 contacts = 3338

© R. Drost
19-09-2014

N = 1608

1608 circles in a circle



radius = 0.023345573384 density = 0.876385400973
ratio = 42.834672318681 contacts = 4052

© R. Drost
19-09-2014