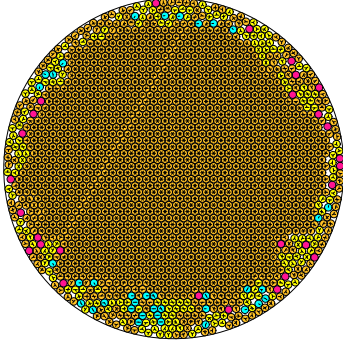


N = 1813

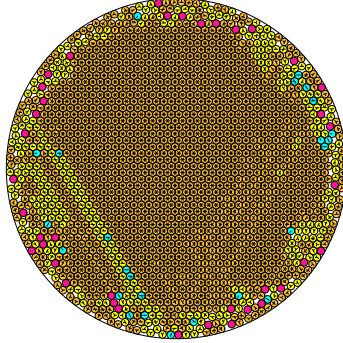
1813 circles in a circle



radius = 0.021986617726 density = 0.876408849281
ratio = 45.482625340419 contacts = 4714

N = 1814

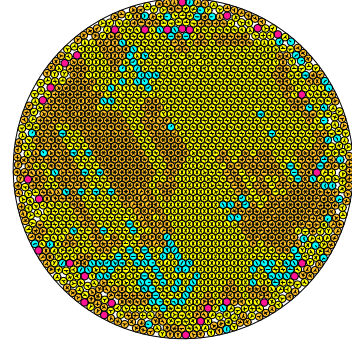
1814 circles in a circle



radius = 0.021980490861 density = 0.876419548964
ratio = 45.494889369577 contacts = 4506

N = 1815

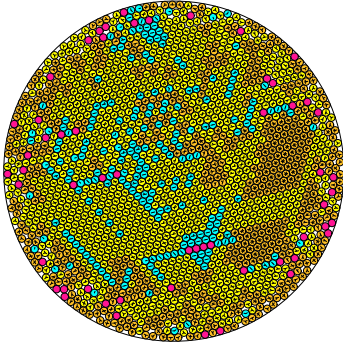
1815 circles in a circle



radius = 0.021977347527 density = 0.876651904866
ratio = 45.501396324539 contacts = 3526

N = 1816

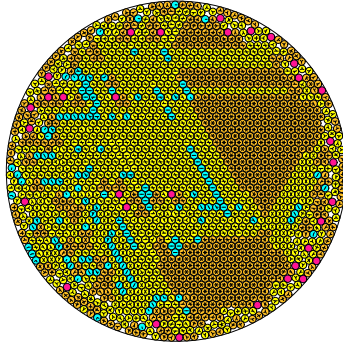
1816 circles in a circle



radius = 0.021968965225 density = 0.876465946471
ratio = 45.518797471556 contacts = 3310

N = 1817

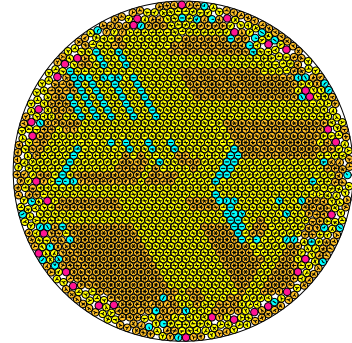
1817 circles in a circle



radius = 0.021964656727 density = 0.876604645741
ratio = 45.527686246671 contacts = 3676

N = 1818

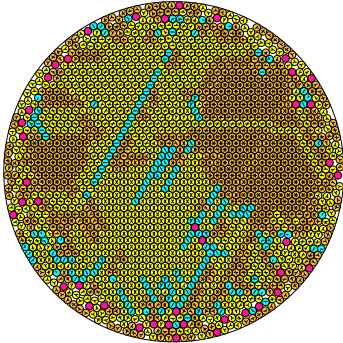
1818 circles in a circle



radius = 0.021960389827 density = 0.876746036027
ratio = 45.536540963494 contacts = 3619

N = 1819

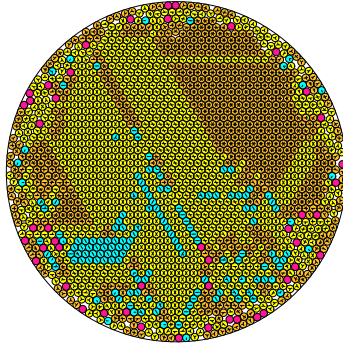
1819 circles in a circle



radius = 0.021951273765 density = 0.876500465778
ratio = 45.555442665329 contacts = 3597

N = 1820

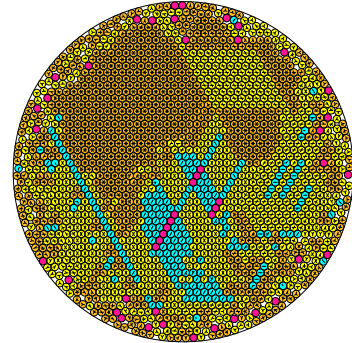
1820 circles in a circle



radius = 0.021945304776 density = 0.876505451094
ratio = 45.567833767595 contacts = 3598

N = 1821

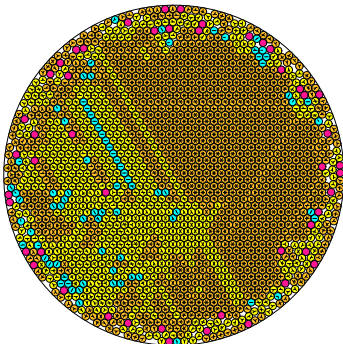
1821 circles in a circle



radius = 0.021932928703 density = 0.876506148928
ratio = 45.58032539621 contacts = 3676

N = 1822

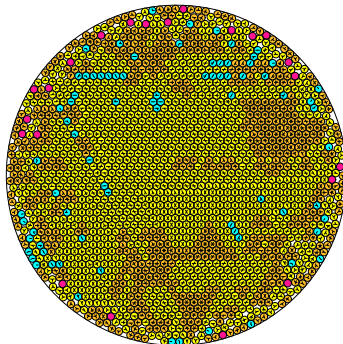
1822 circles in a circle



radius = 0.021937245479 density = 0.876824270865
ratio = 45.5845744659865 contacts = 3985

N = 1823

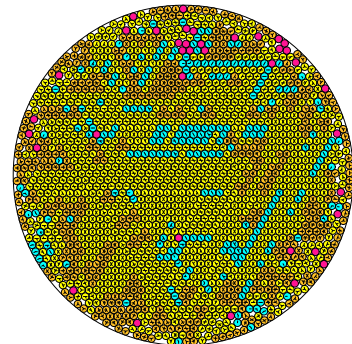
1823 circles in a circle



radius = 0.021930750417 density = 0.876786094637
ratio = 45.598074894611 contacts = 3562

N = 1824

1824 circles in a circle



radius = 0.021925604820 density = 0.876856135596
ratio = 45.608776050870 contacts = 3297