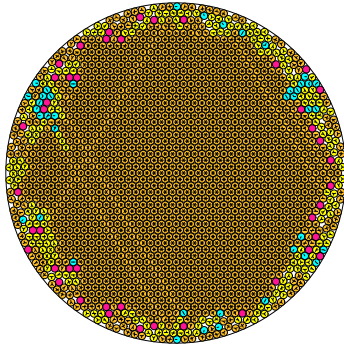


N = 1885

1885 circles in a circle

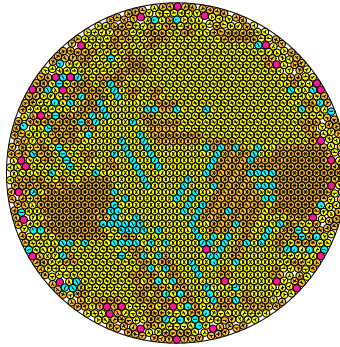


radius = 0.021597378970 density = 0.879252177257
ratio = 46.301914754401 contacts = 4779

© R. Bousquet
2014-2015

N = 1886

1886 circles in a circle

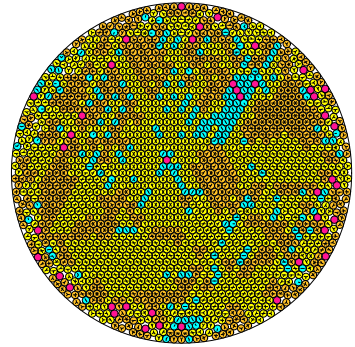


radius = 0.021589050616 density = 0.879040282866
ratio = 46.319776528528 contacts = 3594

© R. Bousquet
2014-2015

N = 1887

1887 circles in a circle

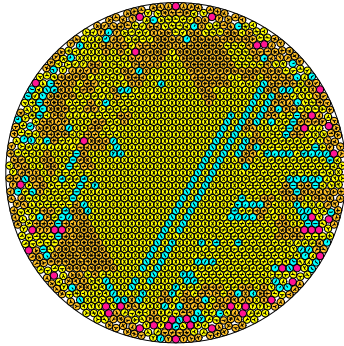


radius = 0.021578378213 density = 0.878637028674
ratio = 46.342685726448 contacts = 3478

© R. Bousquet
2014-2015

N = 1888

1888 circles in a circle

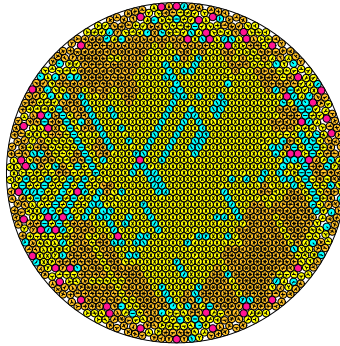


radius = 0.021576728572 density = 0.878968247567
ratio = 46.346228839095 contacts = 3474

© R. Bousquet
2014-2015

N = 1889

1889 circles in a circle

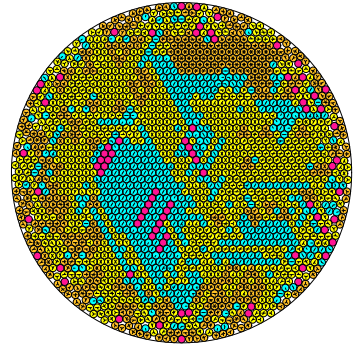


radius = 0.021576079502 density = 0.8789421316917
ratio = 46.346557945646 contacts = 3461

© R. Bousquet
2014-2015

N = 1890

1890 circles in a circle

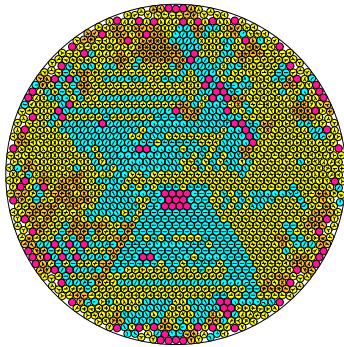


radius = 0.021572367022 density = 0.879543665810
ratio = 46.355599223956 contacts = 3067

© R. Bousquet
2014-2015

N = 1891

1891 circles in a circle

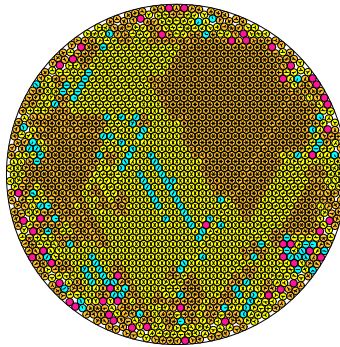


radius = 0.021577966670 density = 0.880465948878
ratio = 46.343569590135 contacts = 2792

© R. Bousquet
2014-2015

N = 1892

1892 circles in a circle

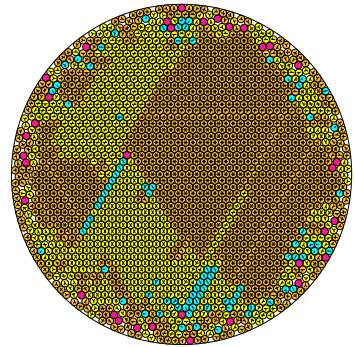


radius = 0.021550933258 density = 0.8782725634318
ratio = 46.401702796406 contacts = 3875

© R. Bousquet
2014-2015

N = 1893

1893 circles in a circle

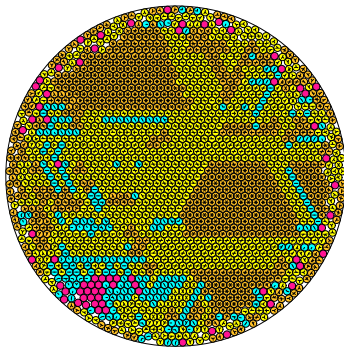


radius = 0.021534272299 density = 0.877831204340
ratio = 46.437603561883 contacts = 4246

© R. Bousquet
2014-2015

N = 1894

1894 circles in a circle

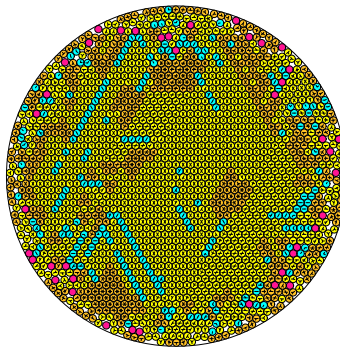


radius = 0.021532954245 density = 0.878187416437
ratio = 46.440446055006 contacts = 3650

© R. Bousquet
2014-2015

N = 1895

1895 circles in a circle

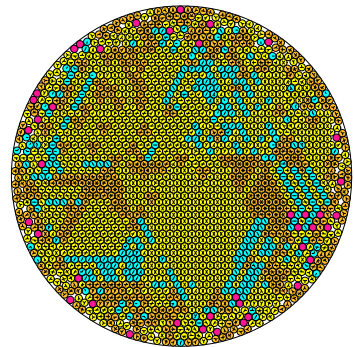


radius = 0.021527809838 density = 0.878231300215
ratio = 46.451343725389 contacts = 3509

© R. Bousquet
2014-2015

N = 1896

1896 circles in a circle



radius = 0.021525630761 density = 0.878516870213
ratio = 46.456246096331 contacts = 3402

© R. Bousquet
2014-2015