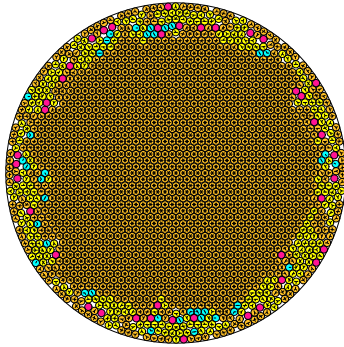


N = 1921

1921 circles in a circle

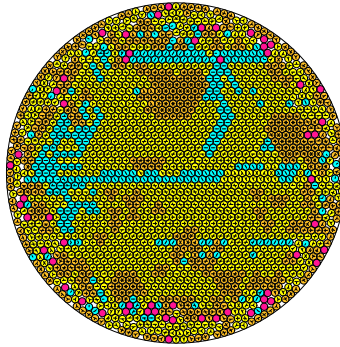


radius = 0.021388633490 density = 0.878806867411  
ratio = 46.753805026743 contacts = 4933

© K. Börner  
20.04.2014

N = 1922

1922 circles in a circle

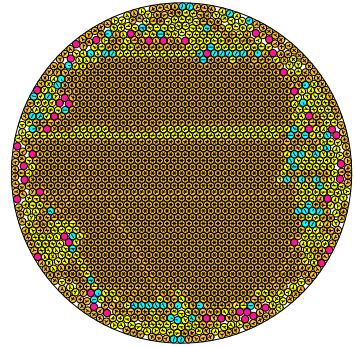


radius = 0.021374718482 density = 0.878120650324  
ratio = 46.784241900002 contacts = 3480

© K. Börner  
20.04.2014

N = 1923

1923 circles in a circle

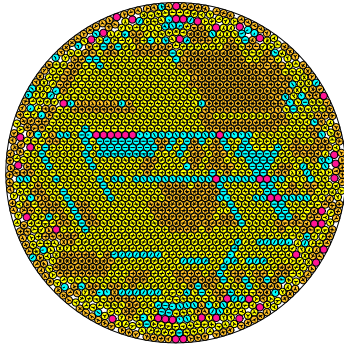


radius = 0.021367949709 density = 0.878021175371  
ratio = 46.799061848287 contacts = 4571

© K. Börner  
20.04.2014

N = 1924

1924 circles in a circle

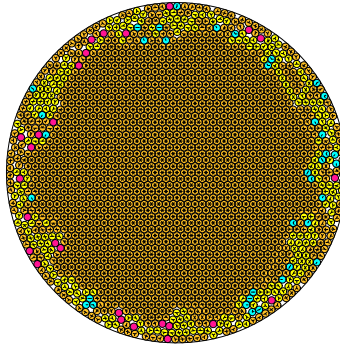


radius = 0.021359640434 density = 0.877794676772  
ratio = 46.817267503714 contacts = 3535

© K. Börner  
20.04.2014

N = 1925

1925 circles in a circle

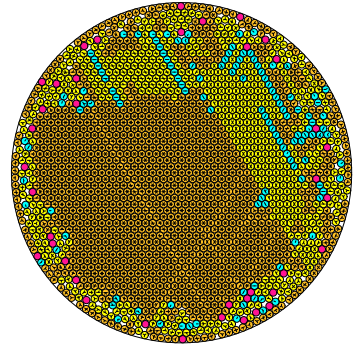


radius = 0.021351063905 density = 0.877545929375  
ratio = 46.836069190697 contacts = 4497

© K. Börner  
20.04.2014

N = 1926

1926 circles in a circle

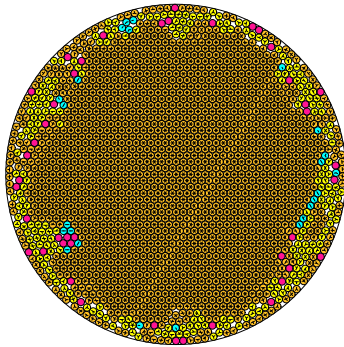


radius = 0.021346036008 density = 0.877588165779  
ratio = 46.847105458814 contacts = 4340

© K. Börner  
20.04.2014

N = 1927

1927 circles in a circle

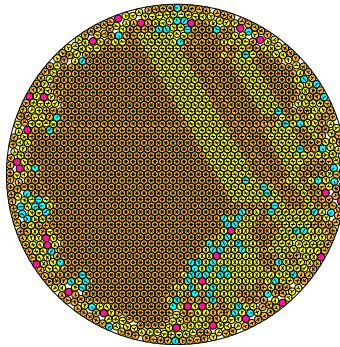


radius = 0.021335652861 density = 0.877189829983  
ratio = 46.869903934810 contacts = 4790

© K. Börner  
20.04.2014

N = 1928

1928 circles in a circle

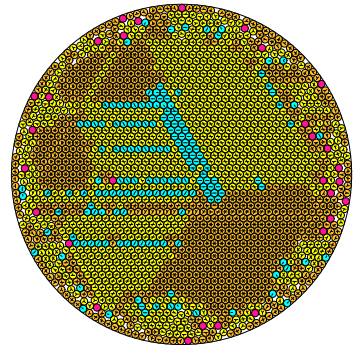


radius = 0.0213315029899 density = 0.877593789486  
ratio = 46.871272492075 contacts = 4469

© K. Börner  
20.04.2014

N = 1929

1929 circles in a circle

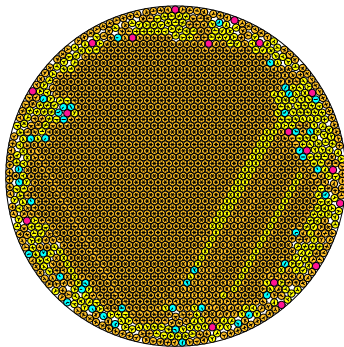


radius = 0.021327725208 density = 0.877447822874  
ratio = 46.8873257890713 contacts = 3922

© K. Börner  
20.04.2014

N = 1930

1930 circles in a circle

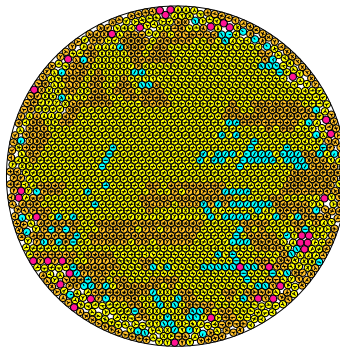


radius = 0.021312983122 density = 0.877689471668  
ratio = 46.919757534254 contacts = 4795

© K. Börner  
20.04.2014

N = 1931

1931 circles in a circle

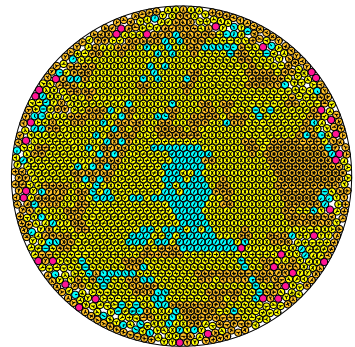


radius = 0.021313793806 density = 0.877210444183  
ratio = 46.9179732890845 contacts = 3636

© K. Börner  
20.04.2014

N = 1932

1932 circles in a circle



radius = 0.021307347283 density = 0.877133889210  
ratio = 46.932167890739 contacts = 3523

© K. Börner  
20.04.2014