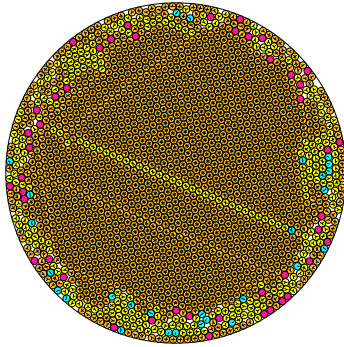


N = 1969

1969 circles in a circle

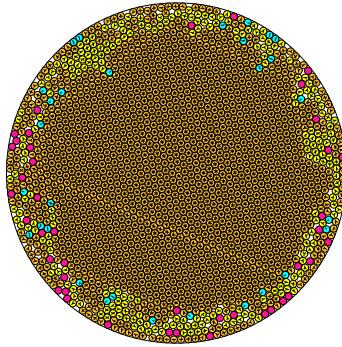


radius = 0.021109856146 density = 0.877437646170
ratio = 47.371237070204 contacts = 4934

© R. Drost
20-09-2014

N = 1970

1970 circles in a circle

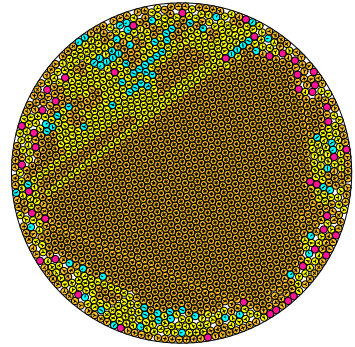


radius = 0.021107986315 density = 0.877727759923
ratio = 47.375433406969 contacts = 5020

© R. Drost
20-09-2014

N = 1971

1971 circles in a circle

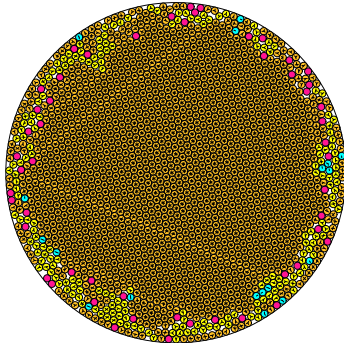


radius = 0.021100378152 density = 0.877540363556
ratio = 47.392515564429 contacts = 4695

© R. Drost
20-09-2014

N = 1972

1972 circles in a circle

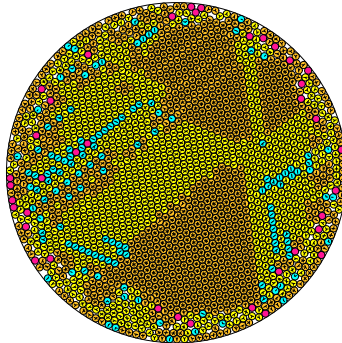


radius = 0.021095407480 density = 0.877671979426
ratio = 47.403662576297 contacts = 5090

© R. Drost
20-09-2014

N = 1973

1973 circles in a circle

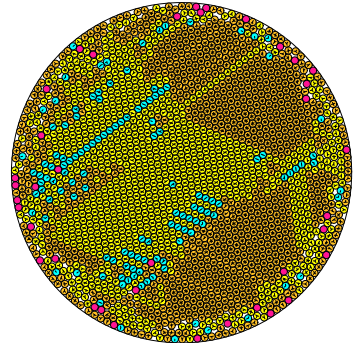


radius = 0.021089022815 density = 0.877485600709
ratio = 47.418033959513 contacts = 4122

© R. Drost
20-09-2014

N = 1974

1974 circles in a circle

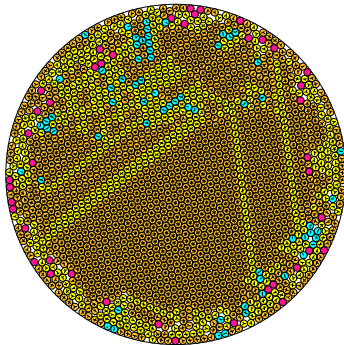


radius = 0.021087964714 density = 0.877842252926
ratio = 47.420413185988 contacts = 4121

© R. Drost
20-09-2014

N = 1975

1975 circles in a circle

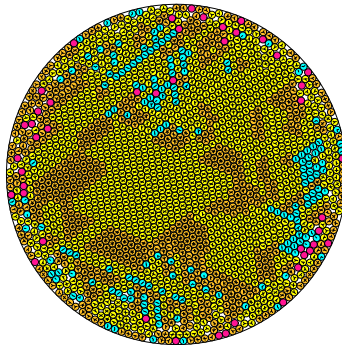


radius = 0.021080248223 density = 0.877644308659
ratio = 47.437771577483 contacts = 4499

© R. Drost
20-09-2014

N = 1976

1976 circles in a circle

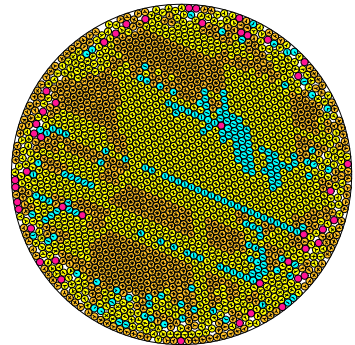


radius = 0.021075799603 density = 0.877718113943
ratio = 47.447784607094 contacts = 3746

© R. Drost
20-09-2014

N = 1977

1977 circles in a circle

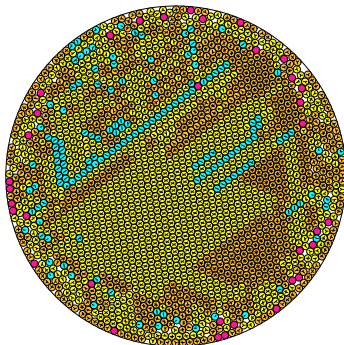


radius = 0.021068200739 density = 0.877529375827
ratio = 47.464898042745 contacts = 3801

© R. Drost
20-09-2014

N = 1978

1978 circles in a circle

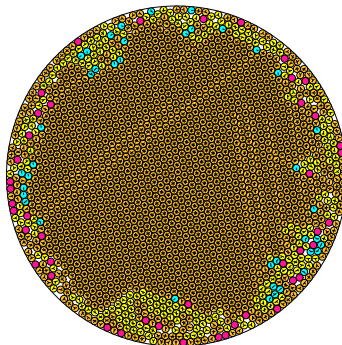


radius = 0.021064345976 density = 0.877651796063
ratio = 47.473584089252 contacts = 3856

© R. Drost
20-09-2014

N = 1979

1979 circles in a circle

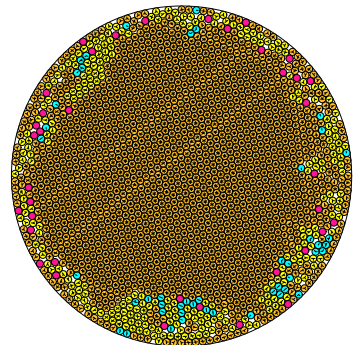


radius = 0.021056669329 density = 0.877455596708
ratio = 47.480891572467 contacts = 4931

© R. Drost
20-09-2014

N = 1980

1980 circles in a circle



radius = 0.021054563201 density = 0.877723370497
ratio = 47.495642178708 contacts = 4973

© R. Drost
20-09-2014