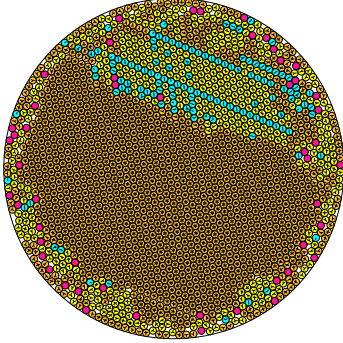


N = 1993

1993 circles in a circle

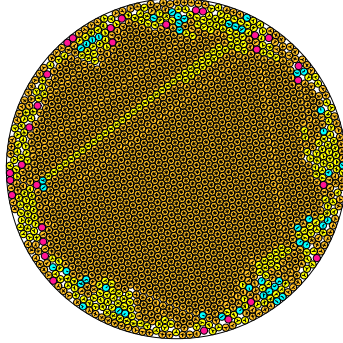


radius = 0.020982457543 density = 0.877445204458
ratio = 47.658859689188 contacts = 4719

© R. Bostett
27-09-2014

N = 1994

1994 circles in a circle

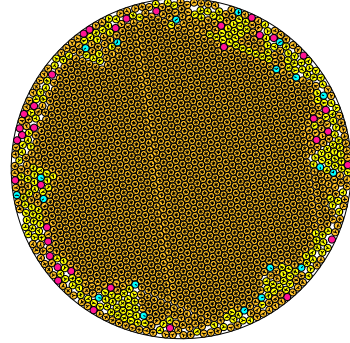


radius = 0.020974316237 density = 0.877204351566
ratio = 47.677358761187 contacts = 5002

© R. Bostett
27-09-2014

N = 1995

1995 circles in a circle

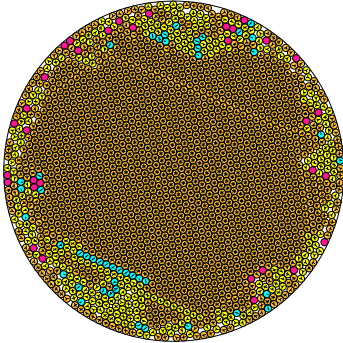


radius = 0.020964329973 density = 0.876808746767
ratio = 47.700069656113 contacts = 5179

© R. Bostett
27-09-2014

N = 1996

1996 circles in a circle

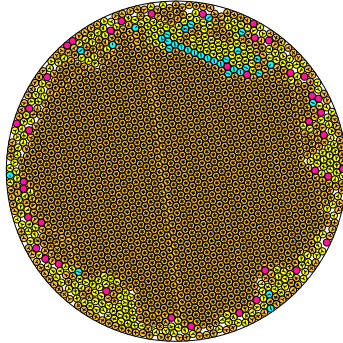


radius = 0.020959167344 density = 0.876816244724
ratio = 47.711819061670 contacts = 5067

© R. Bostett
27-09-2014

N = 1997

1997 circles in a circle

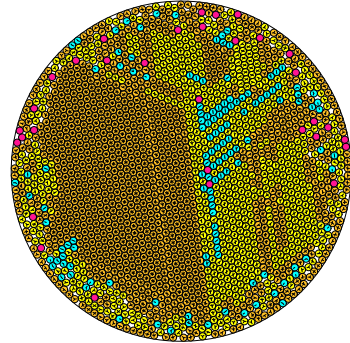


radius = 0.020956228076 density = 0.877009499842
ratio = 47.718511002268 contacts = 5111

© R. Bostett
27-09-2014

N = 1998

1998 circles in a circle

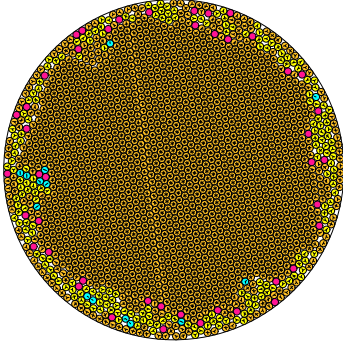


radius = 0.020950115543 density = 0.876936867862
ratio = 47.732433644071 contacts = 4318

© R. Bostett
27-09-2014

N = 1999

1999 circles in a circle

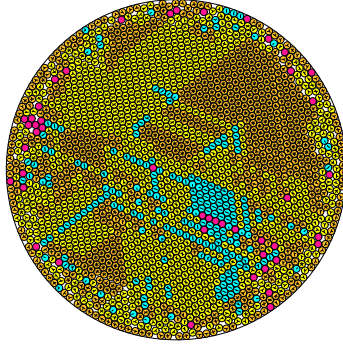


radius = 0.020947416640 density = 0.877149733519
ratio = 47.738583577334 contacts = 5219

© R. Bostett
27-09-2014

N = 2000

2000 circles in a circle

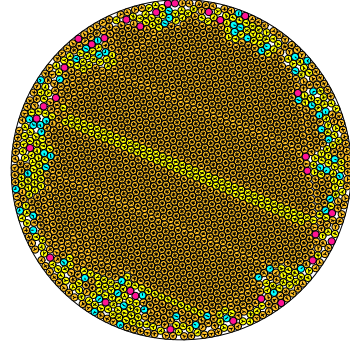


radius = 0.020945043128 density = 0.877389643292
ratio = 47.743993357994 contacts = 3889

© R. Bostett
27-09-2014

N = 2001

2001 circles in a circle

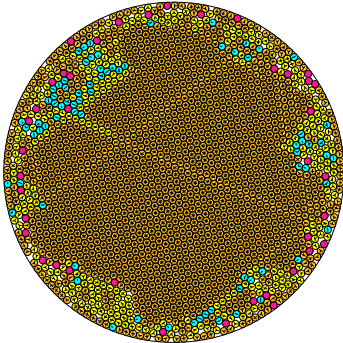


radius = 0.020936517293 density = 0.877113850511
ratio = 47.763435818184 contacts = 4917

© R. Bostett
27-09-2014

N = 2002

2002 circles in a circle

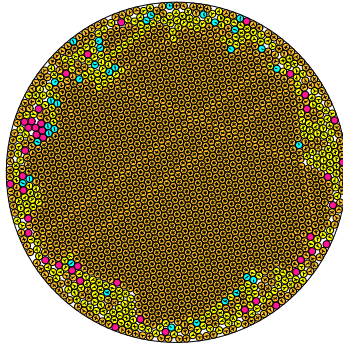


radius = 0.020930360687 density = 0.877036156935
ratio = 47.777485298785 contacts = 4938

© R. Bostett
27-09-2014

N = 2003

2003 circles in a circle

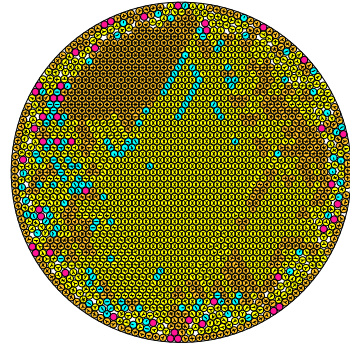


radius = 0.020923837706 density = 0.876927389674
ratio = 47.792379870059 contacts = 5008

© R. Bostett
27-09-2014

N = 2004

2004 circles in a circle



radius = 0.020917329059 density = 0.876819448565
ratio = 47.807250972042 contacts = 3857

© R. Bostett
27-09-2014