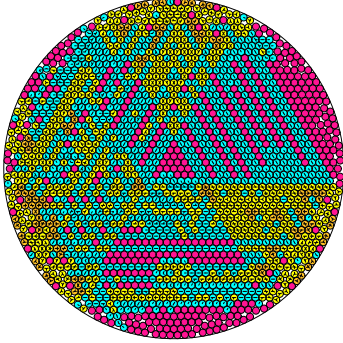


N = 2029

2029 circles in a circle

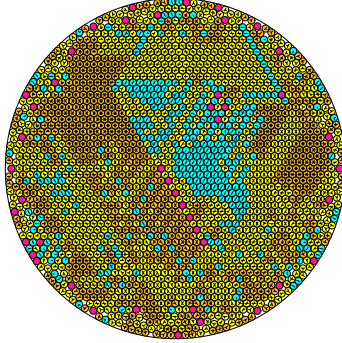


radius = 0.020843353965 density = 0.881489725782
ratio = 47.976923563346 contacts = 2154

© R. Bostett
20-09-2014

N = 2030

2030 circles in a circle

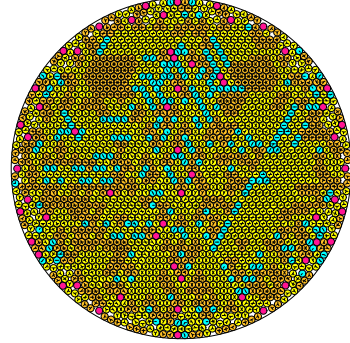


radius = 0.020822845700 density = 0.880189533208
ratio = 48.024175676710 contacts = 3717

© R. Bostett
20-09-2014

N = 2031

2031 circles in a circle

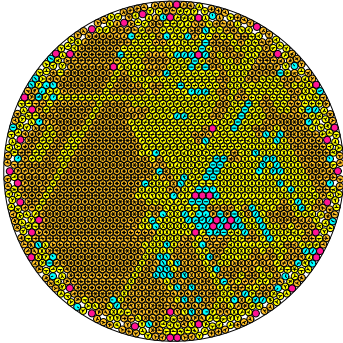


radius = 0.020815642862 density = 0.880013996130
ratio = 48.040793485635 contacts = 3687

© R. Bostett
20-09-2014

N = 2032

2032 circles in a circle

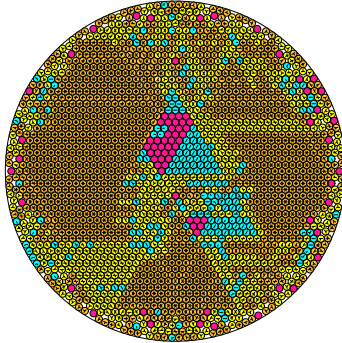


radius = 0.020802044737 density = 0.879297332561
ratio = 48.072197355939 contacts = 4128

© R. Bostett
20-09-2014

N = 2033

2033 circles in a circle

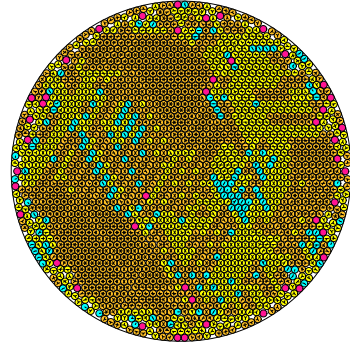


radius = 0.020797190495 density = 0.8793189528337
ratio = 48.083457857584 contacts = 4231

© R. Bostett
20-09-2014

N = 2034

2034 circles in a circle

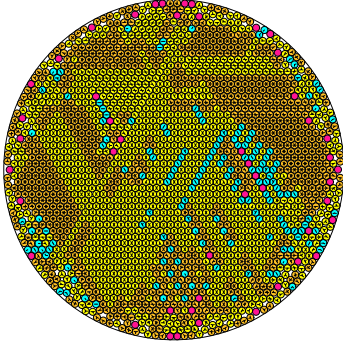


radius = 0.020789840570 density = 0.879130758705
ratio = 48.1004003394857 contacts = 4094

© R. Bostett
20-09-2014

N = 2035

2035 circles in a circle

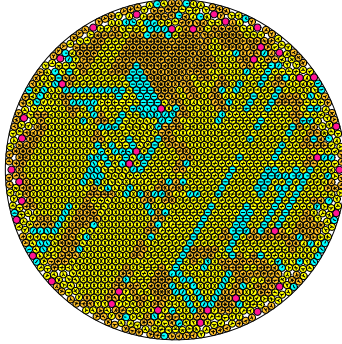


radius = 0.020785831218 density = 0.879222336127
ratio = 48.109694989428 contacts = 4021

© R. Bostett
20-09-2014

N = 2036

2036 circles in a circle

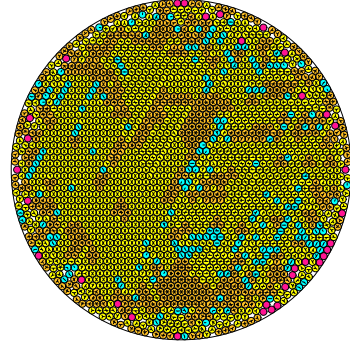


radius = 0.020779162831 density = 0.879091065824
ratio = 48.125134208737 contacts = 3704

© R. Bostett
20-09-2014

N = 2037

2037 circles in a circle

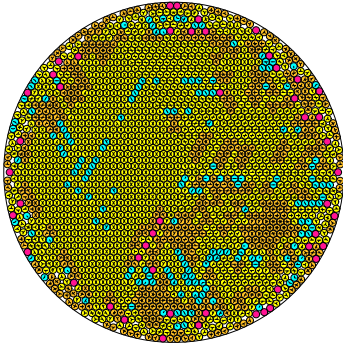


radius = 0.020766510996 density = 0.878452133076
ratio = 48.154454073428 contacts = 3788

© R. Bostett
20-09-2014

N = 2038

2038 circles in a circle

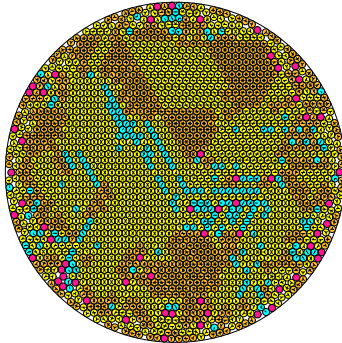


radius = 0.020760896043 density = 0.878408171615
ratio = 48.167477834945 contacts = 3771

© R. Bostett
20-09-2014

N = 2039

2039 circles in a circle

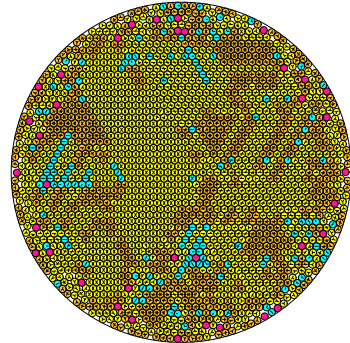


radius = 0.020758244986 density = 0.878614754674
ratio = 48.173629353813 contacts = 3865

© R. Bostett
20-09-2014

N = 2040

2040 circles in a circle



radius = 0.020754618437 density = 0.878738540418
ratio = 48.182046951098 contacts = 3885

© R. Bostett
20-09-2014