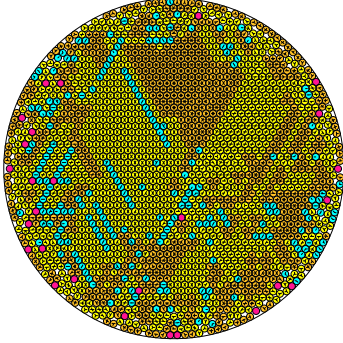


N = 2041

2041 circles in a circle

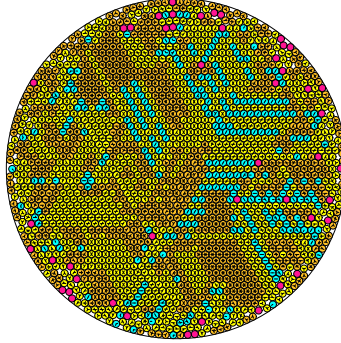


radius = 0.020748229893 density = 0.878628138191
ratio = 48.196882584631 contacts = 3905

© R. Bostett
27-09-2014

N = 2042

2042 circles in a circle

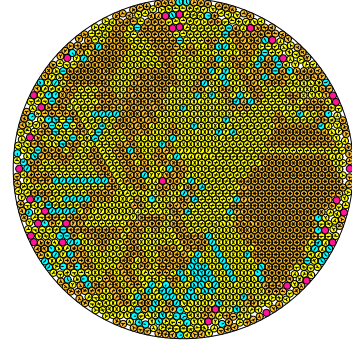


radius = 0.020742269175 density = 0.878553613777
ratio = 48.210732950243 contacts = 3774

© R. Bostett
28-09-2014

N = 2043

2043 circles in a circle

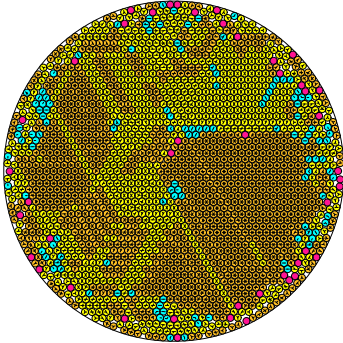


radius = 0.020736345023 density = 0.878481838034
ratio = 48.224506242184 contacts = 4011

© R. Bostett
28-09-2014

N = 2044

2044 circles in a circle

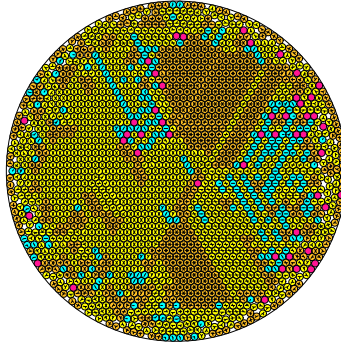


radius = 0.020729774290 density = 0.878354920066
ratio = 48.239792005333 contacts = 4282

© R. Bostett
27-09-2014

N = 2045

2045 circles in a circle

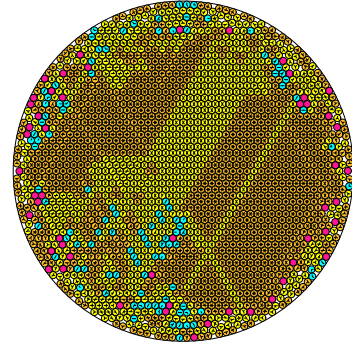


radius = 0.020728275182 density = 0.878657546692
ratio = 48.243280794666 contacts = 3956

© R. Bostett
28-09-2014

N = 2046

2046 circles in a circle

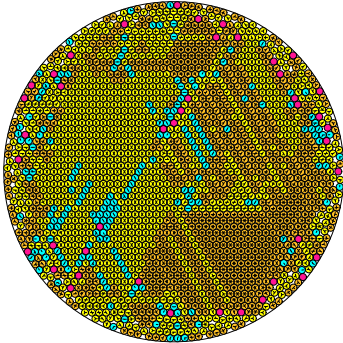


radius = 0.020728037799 density = 0.8794867073304
ratio = 48.243833280794 contacts = 4403

© R. Bostett
28-09-2014

N = 2047

2047 circles in a circle

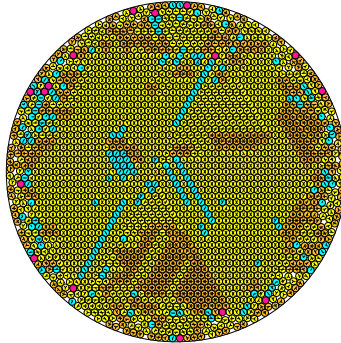


radius = 0.020726477712 density = 0.879293912413
ratio = 48.249396780642 contacts = 3966

© R. Bostett
27-09-2014

N = 2048

2048 circles in a circle

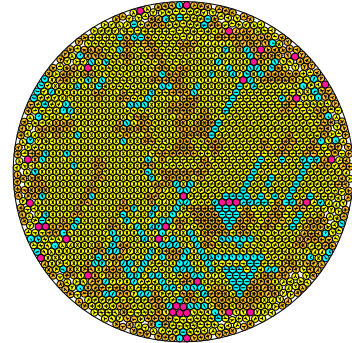


radius = 0.020723000278 density = 0.879498732623
ratio = 48.25560805182 contacts = 3915

© R. Bostett
27-09-2014

N = 2049

2049 circles in a circle

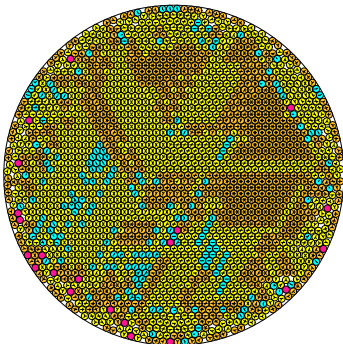


radius = 0.020717817738 density = 0.879488114260
ratio = 48.267631883407 contacts = 3729

© R. Bostett
27-09-2014

N = 2050

2050 circles in a circle

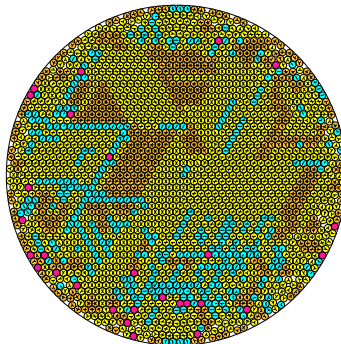


radius = 0.020716123761 density = 0.879773465979
ratio = 48.271578772094 contacts = 3982

© R. Bostett
27-09-2014

N = 2051

2051 circles in a circle

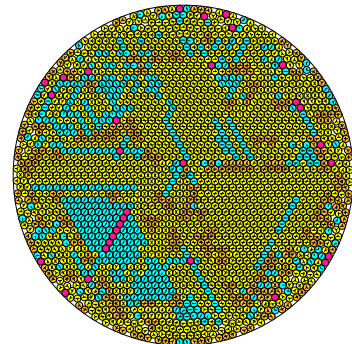


radius = 0.020714990775 density = 0.880106338576
ratio = 48.274218940053 contacts = 3725

© R. Bostett
28-09-2014

N = 2052

2052 circles in a circle



radius = 0.020714266694 density = 0.880473893239
ratio = 48.275906397560 contacts = 3530

© R. Bostett
28-09-2014