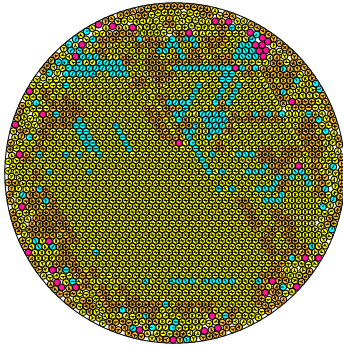


N = 2305

2305 circles in a circle

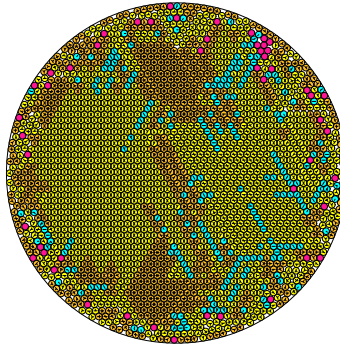


radius = 0.019521252284 density = 0.878387765121
ratio = 51.226221835851 contacts = 4275

© R. Drost
12-06-2014

N = 2306

2306 circles in a circle

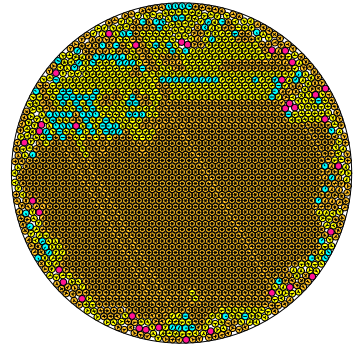


radius = 0.019517017950 density = 0.878387660165
ratio = 51.237335670719 contacts = 4364

© R. Drost
12-06-2014

N = 2307

2307 circles in a circle

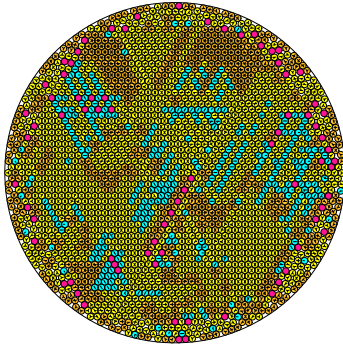


radius = 0.019512608579 density = 0.878371548443
ratio = 51.248914052046 contacts = 5399

© R. Drost
12-06-2014

N = 2308

2308 circles in a circle

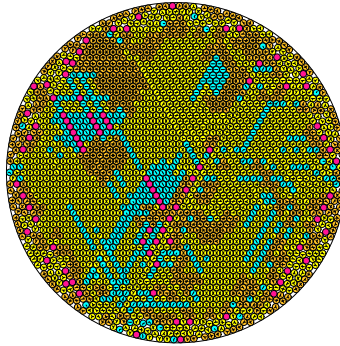


radius = 0.019497983620 density = 0.877057540398
ratio = 51.298404634520 contacts = 4128

© R. Drost
12-06-2014

N = 2309

2309 circles in a circle

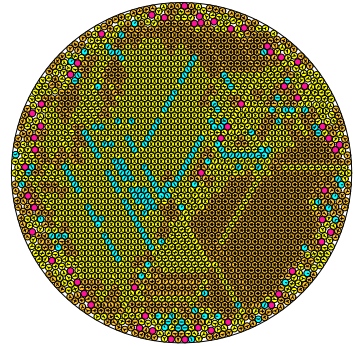


radius = 0.019488637341 density = 0.876974329297
ratio = 51.311950779820 contacts = 4079

© R. Drost
12-06-2014

N = 2310

2310 circles in a circle

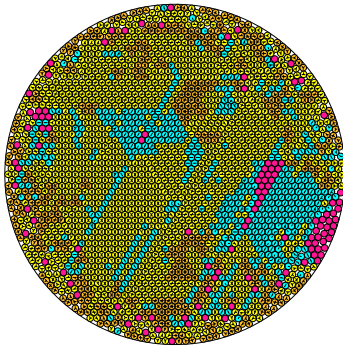


radius = 0.019483412007 density = 0.876793712297
ratio = 51.328346799725 contacts = 4563

© R. Drost
12-06-2014

N = 2311

2311 circles in a circle

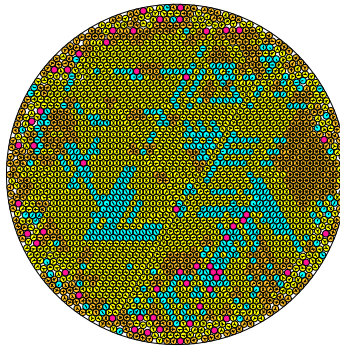


radius = 0.019475813818 density = 0.876579225503
ratio = 51.345736272006 contacts = 3829

© R. Drost
12-06-2014

N = 2312

2312 circles in a circle

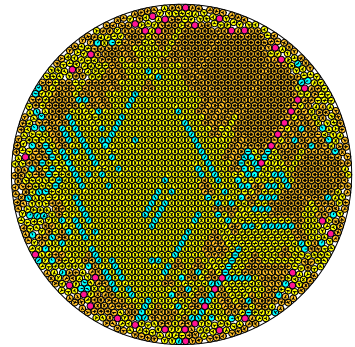


radius = 0.019472501126 density = 0.876660229811
ratio = 51.354471289714 contacts = 4044

© R. Drost
12-06-2014

N = 2313

2313 circles in a circle

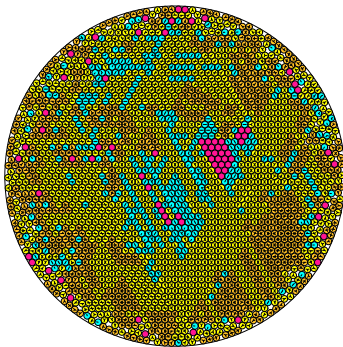


radius = 0.019474547775 density = 0.877223779573
ratio = 51.349074265212 contacts = 4457

© R. Drost
12-06-2014

N = 2314

2314 circles in a circle

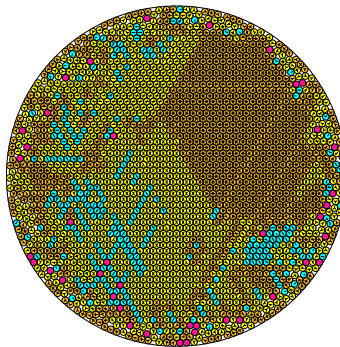


radius = 0.019463836033 density = 0.878460371198
ratio = 51.324595337384 contacts = 4084

© R. Drost
12-06-2014

N = 2315

2315 circles in a circle

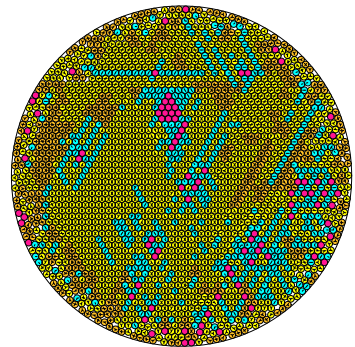


radius = 0.019480233173 density = 0.878495006514
ratio = 51.334687797845 contacts = 4646

© R. Drost
12-06-2014

N = 2316

2316 circles in a circle



radius = 0.019477869981 density = 0.878661262409
ratio = 51.340334508274 contacts = 3898

© R. Drost
12-06-2014