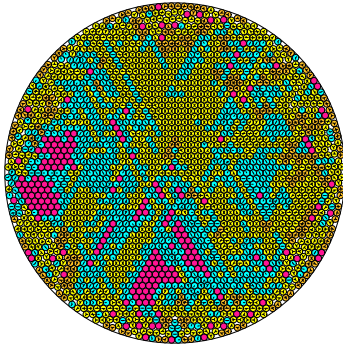


N = 2401

2401 circles in a circle

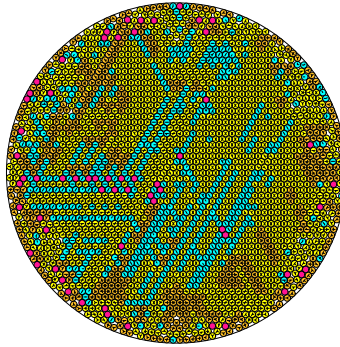


radius = 0.019134288080 density = 0.879056473801
ratio = 52.262200495800 contacts = 3339

© R. Drost
10-08-2014

N = 2402

2402 circles in a circle

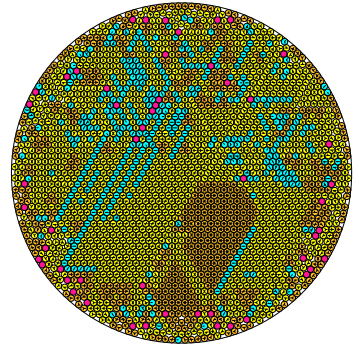


radius = 0.019130450824 density = 0.879069905294
ratio = 52.272683439304 contacts = 4115

© R. Drost
10-08-2014

N = 2403

2403 circles in a circle

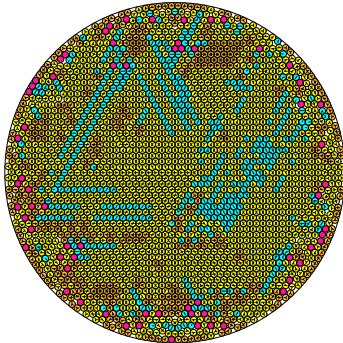


radius = 0.019128141357 density = 0.879223557663
ratio = 52.27899466461 contacts = 4341

© R. Drost
10-08-2014

N = 2404

2404 circles in a circle

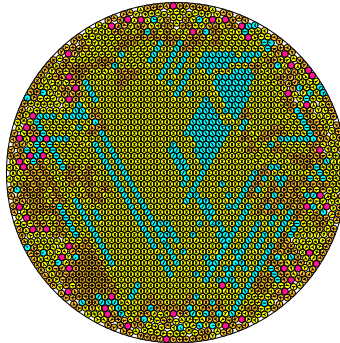


radius = 0.019126304903 density = 0.879504684651
ratio = 52.278547685993 contacts = 4208

© R. Drost
10-08-2014

N = 2405

2405 circles in a circle

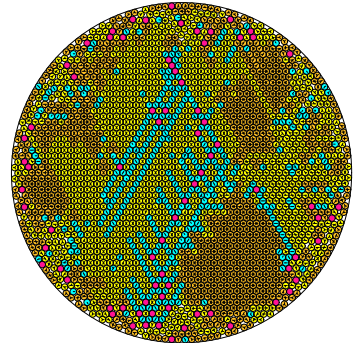


radius = 0.01912509143 density = 0.879485567570
ratio = 52.287009910073 contacts = 4238

© R. Drost
10-08-2014

N = 2406

2406 circles in a circle

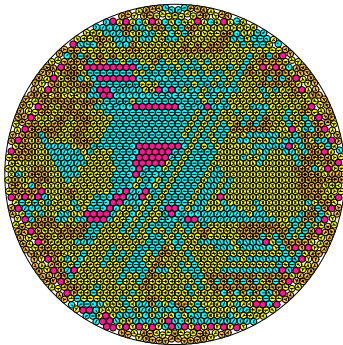


radius = 0.019121577878 density = 0.879717185742
ratio = 52.296939425445 contacts = 4497

© R. Drost
10-08-2014

N = 2407

2407 circles in a circle

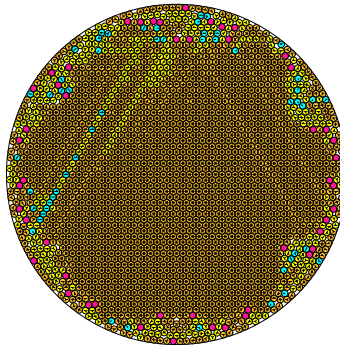


radius = 0.019126122026 density = 0.880501164817
ratio = 52.284514270018 contacts = 3643

© R. Drost
10-08-2014

N = 2408

2408 circles in a circle

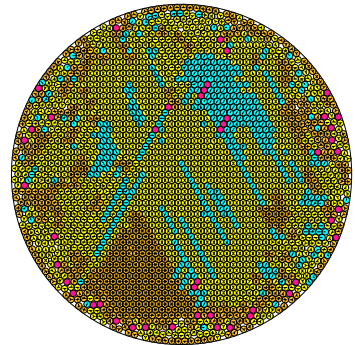


radius = 0.019109493646 density = 0.879335975722
ratio = 52.330010336416 contacts = 6010

© R. Drost
10-08-2014

N = 2409

2409 circles in a circle

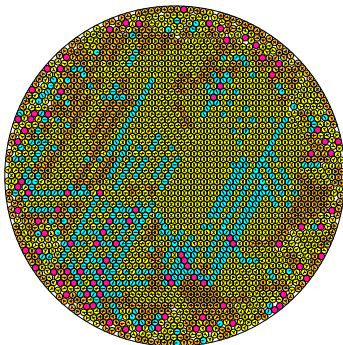


radius = 0.019100649553 density = 0.878887065395
ratio = 52.354240477560 contacts = 4406

© R. Drost
10-08-2014

N = 2410

2410 circles in a circle

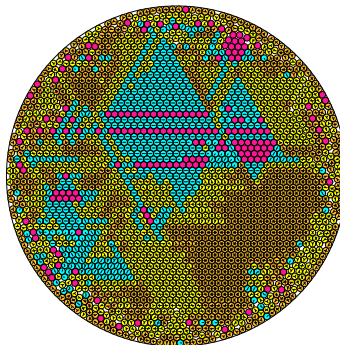


radius = 0.019094194612 density = 0.87867725586
ratio = 52.37193937250 contacts = 4382

© R. Drost
10-08-2014

N = 2411

2411 circles in a circle

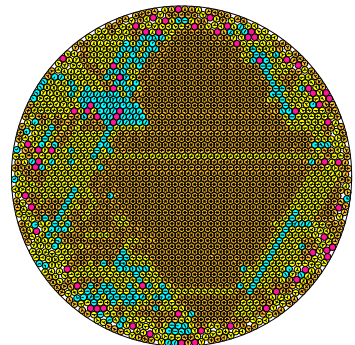


radius = 0.019091286419 density = 0.878754570535
ratio = 52.379917312359 contacts = 4119

© R. Drost
10-08-2014

N = 2412

2412 circles in a circle



radius = 0.019104905740 density = 0.880373785122
ratio = 52.342377010679 contacts = 5160

© R. Drost
10-08-2014