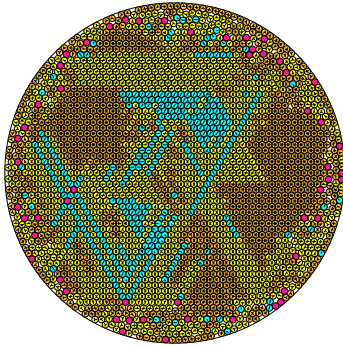


N = 2413

2413 circles in a circle

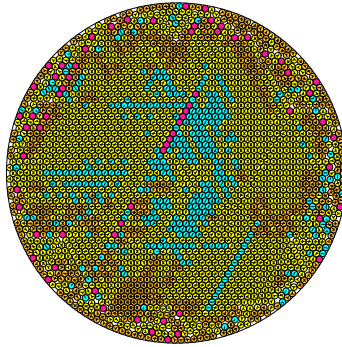


radius = 0.019077994580 density = 0.878259313642  
 ratio = 52.416410740791 contacts = 4750

© M. Mecke

N = 2414

2414 circles in a circle

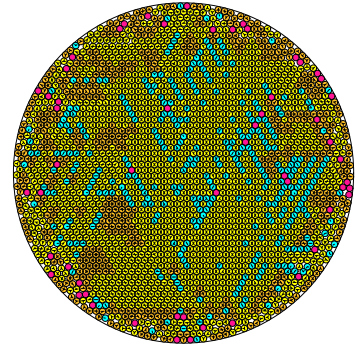


radius = 0.019069326125 density = 0.877825026088  
 ratio = 52.440237972989 contacts = 4278

© M. Mecke

N = 2415

2415 circles in a circle

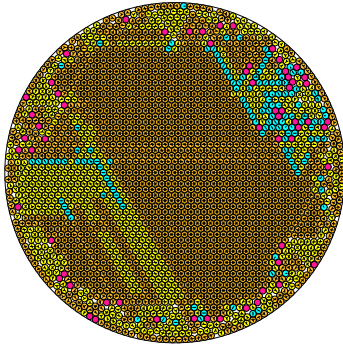


radius = 0.019084858242 density = 0.879619831051  
 ratio = 52.397359748336 contacts = 4356

© M. Mecke

N = 2416

2416 circles in a circle

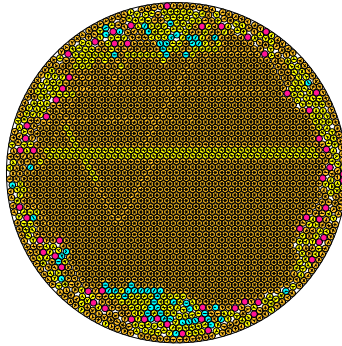


radius = 0.019061686119 density = 0.877848662297  
 ratio = 52.461250576977 contacts = 5542

© M. Mecke

N = 2417

2417 circles in a circle

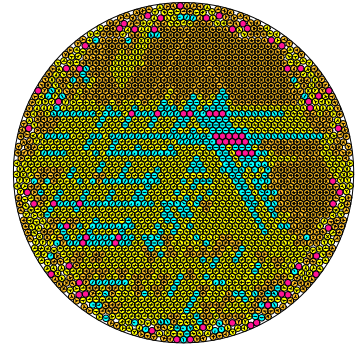


radius = 0.019059396620 density = 0.878000887497  
 ratio = 52.467557974081 contacts = 5988

© M. Mecke

N = 2418

2418 circles in a circle

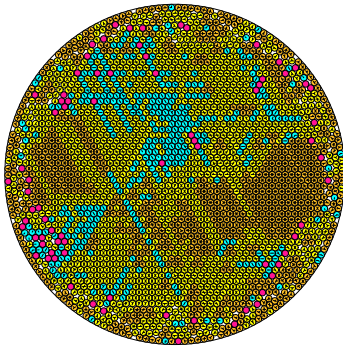


radius = 0.019077661830 density = 0.880048463438  
 ratio = 52.417324979259 contacts = 4473

© M. Mecke

N = 2419

2419 circles in a circle

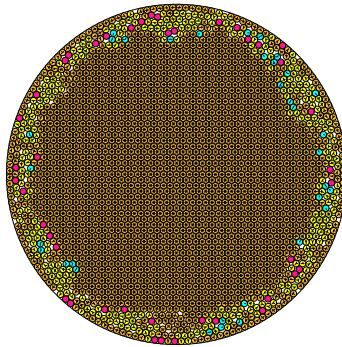


radius = 0.019060310011 density = 0.87791501670  
 ratio = 52.465406786894 contacts = 4413

© M. Mecke

N = 2420

2420 circles in a circle

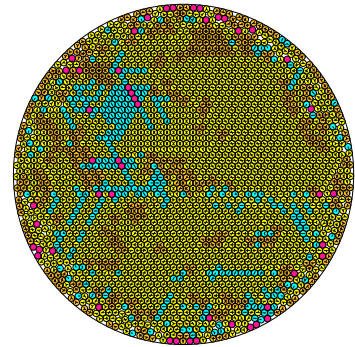


radius = 0.019036632665 density = 0.876991987408  
 ratio = 52.530298692626 contacts = 6337

© M. Mecke

N = 2421

2421 circles in a circle

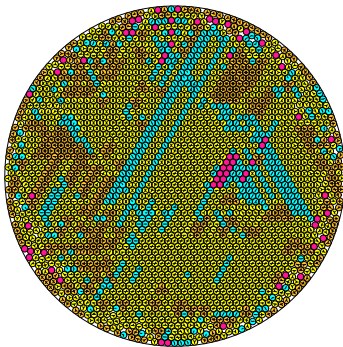


radius = 0.019064216533 density = 0.879898776194  
 ratio = 52.454293009702 contacts = 4352

© M. Mecke

N = 2422

2422 circles in a circle

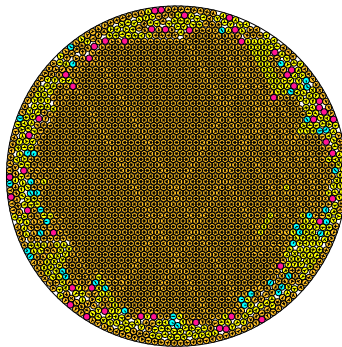


radius = 0.019060310011 density = 0.8779901501670  
 ratio = 52.465043823714 contacts = 4214

© M. Mecke

N = 2423

2423 circles in a circle

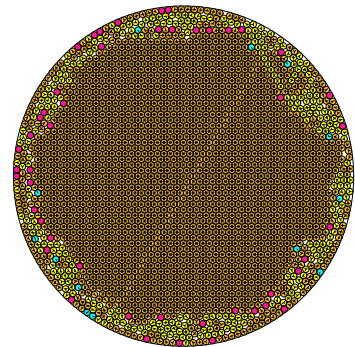


radius = 0.019028701757 density = 0.877347681652  
 ratio = 52.53232616782 contacts = 5912

© M. Mecke

N = 2424

2424 circles in a circle



radius = 0.019021253582 density = 0.877022804942  
 ratio = 52.572770341452 contacts = 6345

© M. Mecke