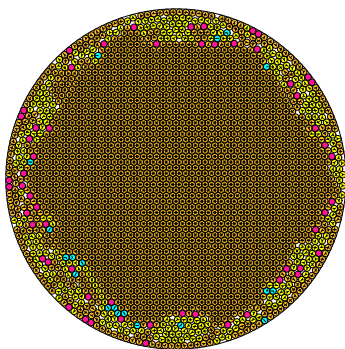


N = 2425

2425 circles in a circle

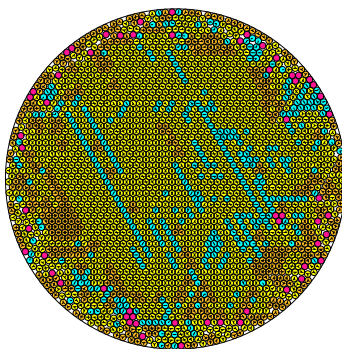


radius = 0.019018486575 density = 0.877129366657
ratio = 52.580419374895 contacts = 6327

© R. Drost
12-08-2014

N = 2426

2426 circles in a circle

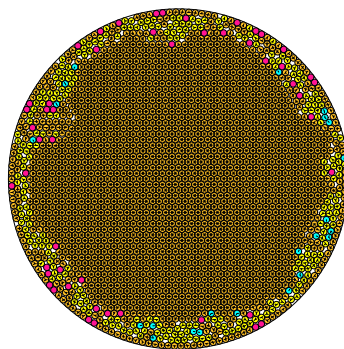


radius = 0.019041473840 density = 0.879613563263
ratio = 52.916943195122 contacts = 4312

© R. Drost
12-08-2014

N = 2427

2427 circles in a circle

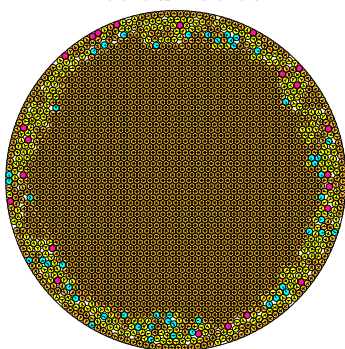


radius = 0.019013434689 density = 0.877386465711
ratio = 52.594390037279 contacts = 6382

© R. Drost
12-08-2014

N = 2428

2428 circles in a circle

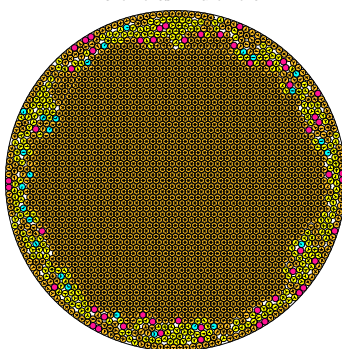


radius = 0.019008726666 density = 0.877313344807
ratio = 52.607416371433 contacts = 6394

© R. Drost
12-08-2014

N = 2429

2429 circles in a circle

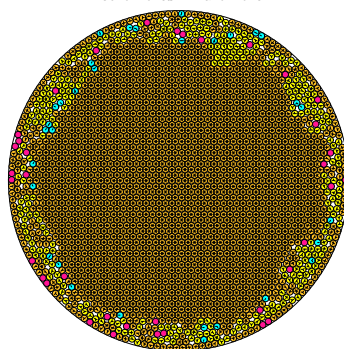


radius = 0.019002994975 density = 0.877145463974
ratio = 52.623283925174 contacts = 6363

© R. Drost
12-08-2014

N = 2430

2430 circles in a circle

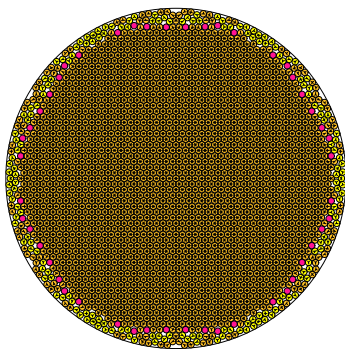


radius = 0.018998626371 density = 0.877103163729
ratio = 52.635384287597 contacts = 6355

© R. Drost
12-08-2014

N = 2431

2431 circles in a circle

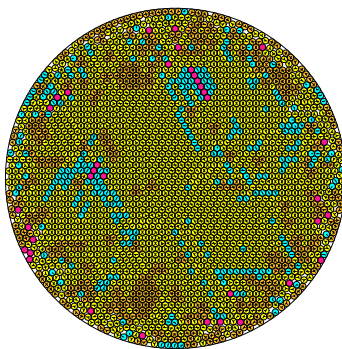


radius = 0.019002838462 density = 0.877853231013
ratio = 52.623717346681 contacts = 6666

© R. Drost
12-08-2014

N = 2432

2432 circles in a circle

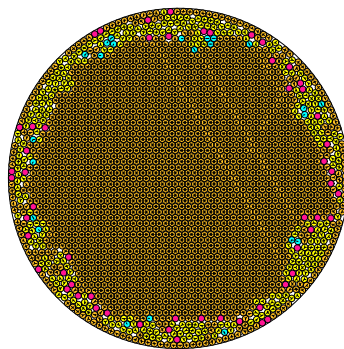


radius = 0.019008555039 density = 0.878742800504
ratio = 52.607891443317 contacts = 4449

© R. Drost
12-08-2014

N = 2433

2433 circles in a circle

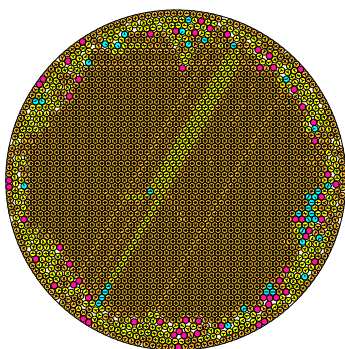


radius = 0.018982500483 density = 0.8766958064739
ratio = 52.680098751205 contacts = 6268

© R. Drost
12-08-2014

N = 2434

2434 circles in a circle

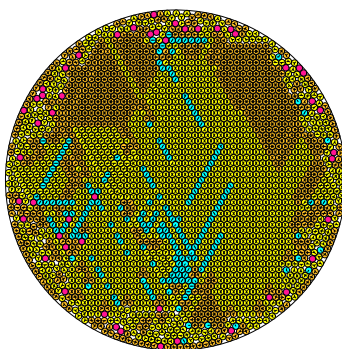


radius = 0.018970337847 density = 0.875932629656
ratio = 52.713874053353 contacts = 5989

© R. Drost
12-08-2014

N = 2435

2435 circles in a circle

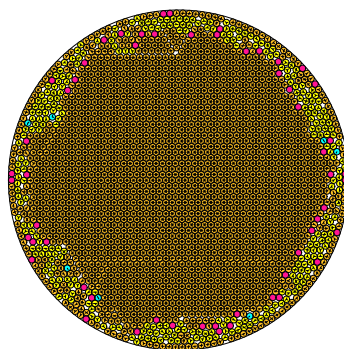


radius = 0.018967382627 density = 0.8760195005013
ratio = 52.722873158238 contacts = 4795

© R. Drost
12-08-2014

N = 2436

2436 circles in a circle



radius = 0.018964014041 density = 0.87606806341
ratio = 52.731452204051 contacts = 6363

© R. Drost
12-08-2014