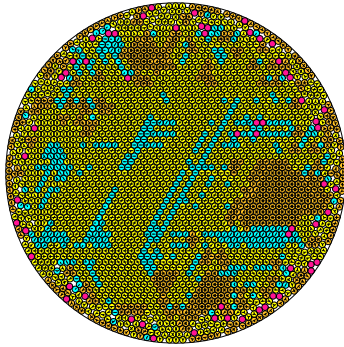


N = 2461

2461 circles in a circle

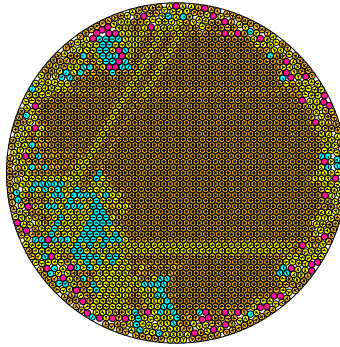


radius = 0.018896894458 density = 0.878804938228
ratio = 52.918748221308 contacts = 4442

© R. Stein
12-08-2014

N = 2462

2462 circles in a circle

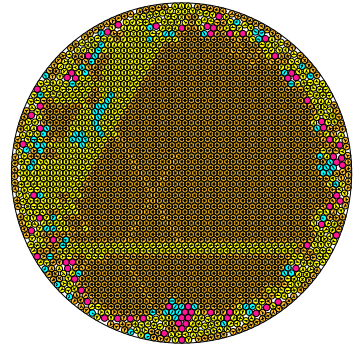


radius = 0.018897479223 density = 0.879216443067
ratio = 52.917110700133 contacts = 5729

© R. Stein
12-08-2014

N = 2463

2463 circles in a circle

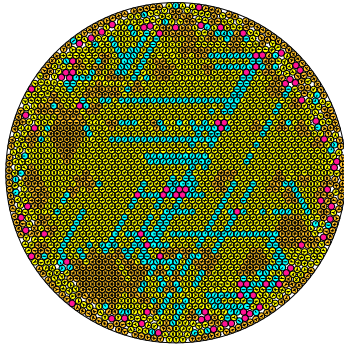


radius = 0.018892392397 density = 0.879155933255
ratio = 52.929677788039 contacts = 5851

© R. Stein
12-08-2014

N = 2464

2464 circles in a circle

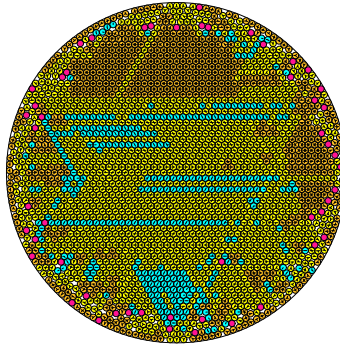


radius = 0.018886881594 density = 0.879757886961
ratio = 52.952410371982 contacts = 4315

© R. Stein
12-08-2014

N = 2465

2465 circles in a circle

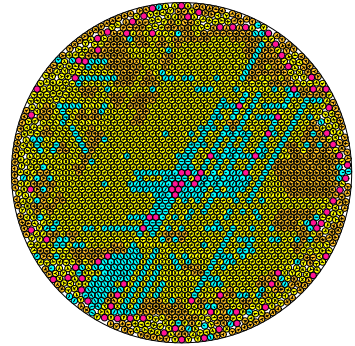


radius = 0.018880899862 density = 0.879743855727
ratio = 52.963577324752 contacts = 4668

© R. Stein
12-08-2014

N = 2466

2466 circles in a circle

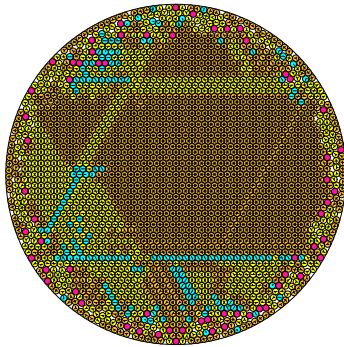


radius = 0.018879351773 density = 0.878956191033
ratio = 52.967920298355 contacts = 4249

© R. Stein
12-08-2014

N = 2467

2467 circles in a circle

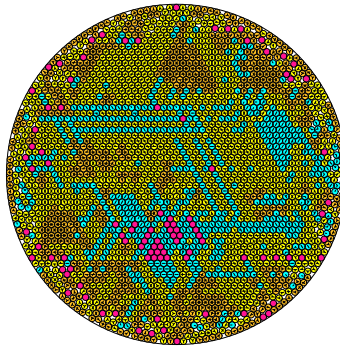


radius = 0.018878857861 density = 0.87926613316
ratio = 52.969306053885 contacts = 5502

© R. Stein
12-08-2014

N = 2468

2468 circles in a circle

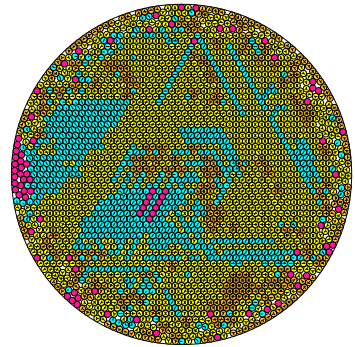


radius = 0.018876944993 density = 0.879444781045
ratio = 52.974673621423 contacts = 4159

© R. Stein
12-08-2014

N = 2469

2469 circles in a circle

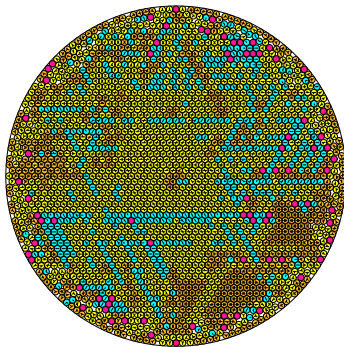


radius = 0.018867961504 density = 0.878963929149
ratio = 52.998986136399 contacts = 4018

© R. Stein
12-08-2014

N = 2470

2470 circles in a circle

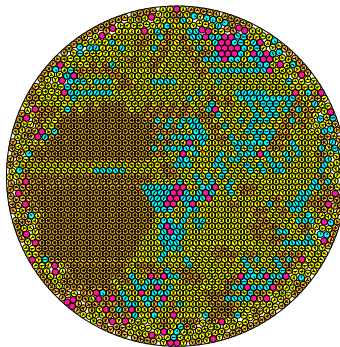


radius = 0.018864982283 density = 0.879042264665
ratio = 53.008266053554 contacts = 4252

© R. Stein
12-08-2014

N = 2471

2471 circles in a circle

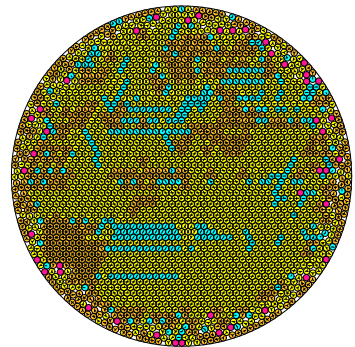


radius = 0.018864168635 density = 0.879322296822
ratio = 53.010326405216 contacts = 4603

© R. Stein
12-08-2014

N = 2472

2472 circles in a circle



radius = 0.018860605449 density = 0.879345866515
ratio = 53.020567271462 contacts = 4511

© R. Stein
12-08-2014