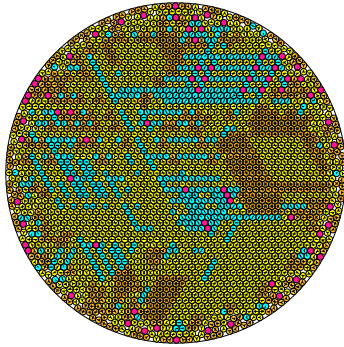


N = 2497

2497 circles in a circle

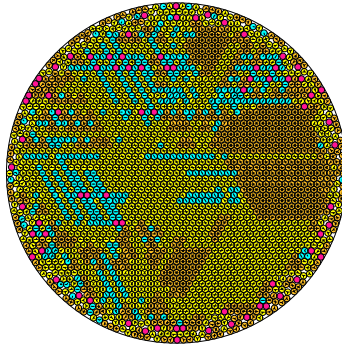


radius = 0.018787744270 density = 0.881389398883
ratio = 53.226187541687 contacts = 4429

© R. Drost
12-08-2014

N = 2498

2498 circles in a circle

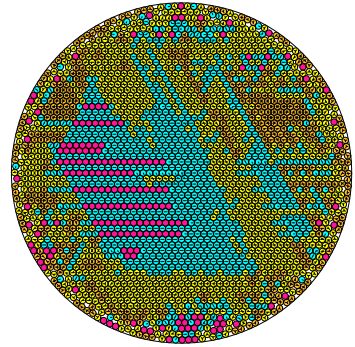


radius = 0.018787413345 density = 0.881711316643
ratio = 53.227125079057 contacts = 4428

© R. Drost
12-08-2014

N = 2499

2499 circles in a circle

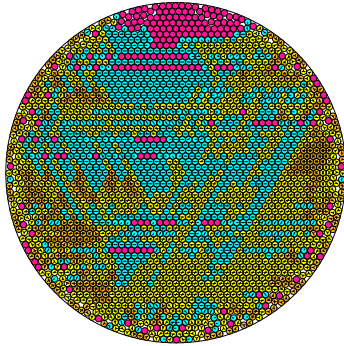


radius = 0.018786781538 density = 0.882004958233
ratio = 53.228915127160 contacts = 3696

© R. Drost
12-08-2014

N = 2500

2500 circles in a circle

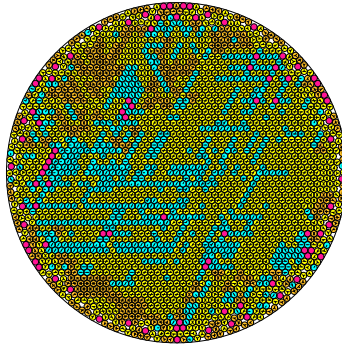


radius = 0.018785759033 density = 0.882261762157
ratio = 53.231815206634 contacts = 3567

© R. Drost
12-08-2014

N = 2501

2501 circles in a circle

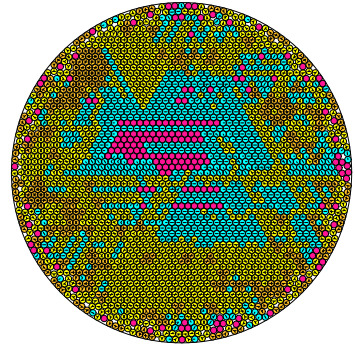


radius = 0.018785633273 density = 0.882602943699
ratio = 53.232168724940 contacts = 4105

© R. Drost
12-08-2014

N = 2502

2502 circles in a circle

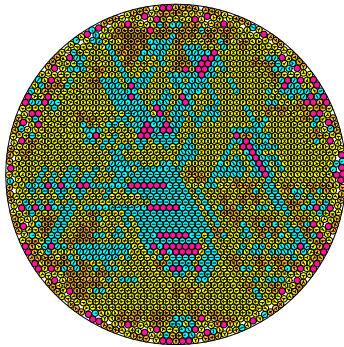


radius = 0.018786873260 density = 0.882884461392
ratio = 53.23432434362 contacts = 3753

© R. Drost
12-08-2014

N = 2503

2503 circles in a circle

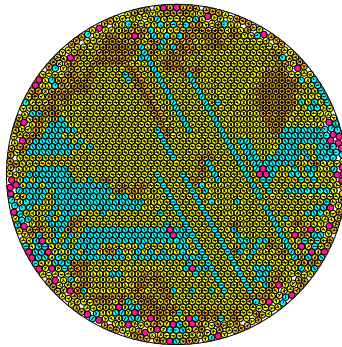


radius = 0.018784757385 density = 0.883226376331
ratio = 53.234650814100 contacts = 3884

© R. Drost
12-08-2014

N = 2504

2504 circles in a circle

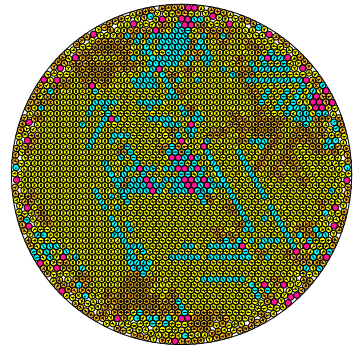


radius = 0.018770983581 density = 0.882283960811
ratio = 53.273713424519 contacts = 4272

© R. Drost
12-08-2014

N = 2505

2505 circles in a circle

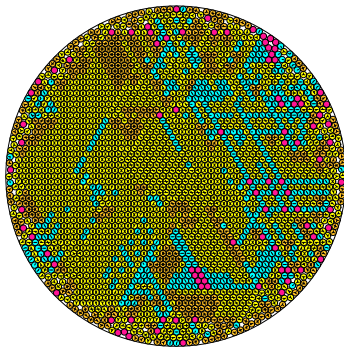


radius = 0.018766764413 density = 0.882239573530
ratio = 53.285690490538 contacts = 4448

© R. Drost
12-08-2014

N = 2506

2506 circles in a circle

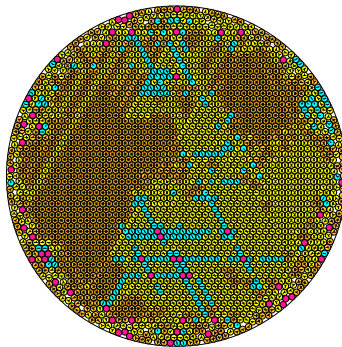


radius = 0.018751978542 density = 0.881201568304
ratio = 53.327706074050 contacts = 4380

© R. Drost
12-08-2014

N = 2507

2507 circles in a circle

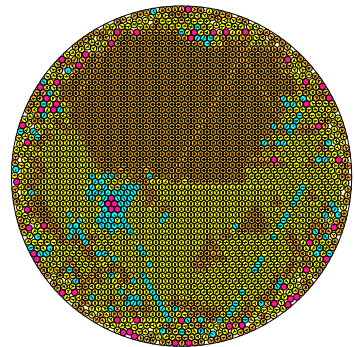


radius = 0.018750218434 density = 0.881387723178
ratio = 53.332712616219 contacts = 5120

© R. Drost
12-08-2014

N = 2508

2508 circles in a circle



radius = 0.018749018810 density = 0.881626471459
ratio = 53.336124450929 contacts = 5342

© R. Drost
12-08-2014