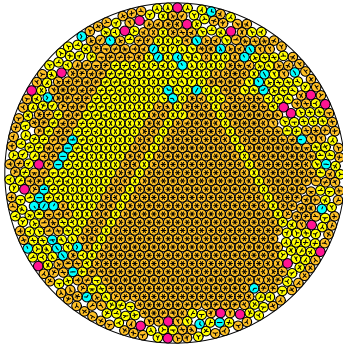


N = 1105

1105 circles in a circle

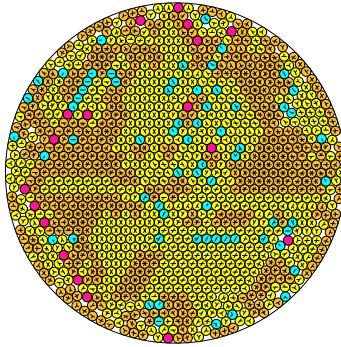


radius = 0.028020069513 density = 0.867562346536
ratio = 35.688705181118 contacts = 2465

© R. Drost
2014-2015

N = 1106

1106 circles in a circle

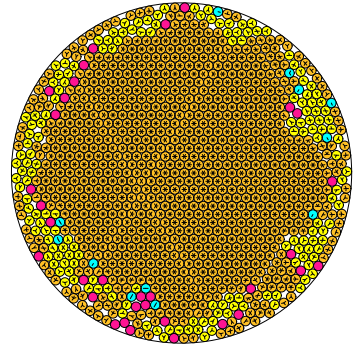


radius = 0.028014930758 density = 0.868028897994
ratio = 35.695251529746 contacts = 2149

© R. Drost
2014-2015

N = 1107

1107 circles in a circle

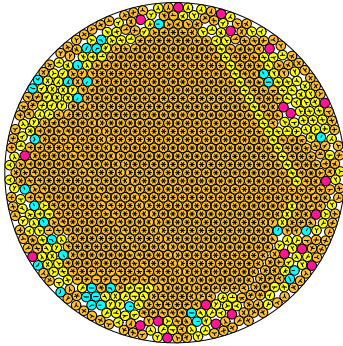


radius = 0.028008522114 density = 0.868416383273
ratio = 35.703418978653 contacts = 2733

© R. Drost
2014-2015

N = 1108

1108 circles in a circle

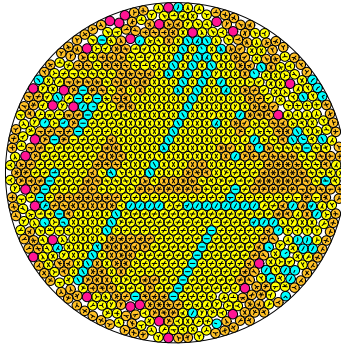


radius = 0.027997452642 density = 0.868516430443
ratio = 35.717464160882 contacts = 2675

© R. Drost
2014-2015

N = 1109

1109 circles in a circle

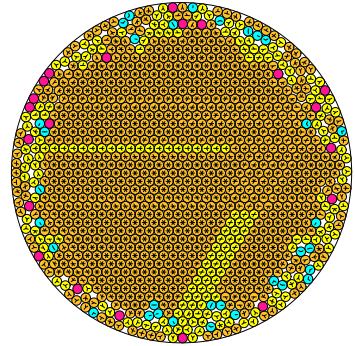


radius = 0.027987065186 density = 0.868652880003
ratio = 35.730791864804 contacts = 2023

© R. Drost
2014-2015

N = 1110

1110 circles in a circle

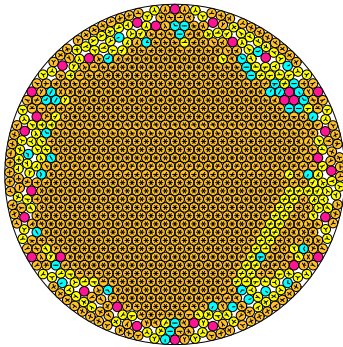


radius = 0.027975427083 density = 0.868913217718
ratio = 35.745656251807 contacts = 2641

© R. Drost
2014-2015

N = 1111

1111 circles in a circle

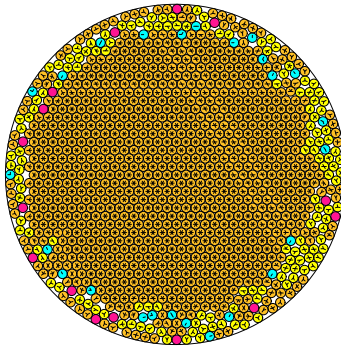


radius = 0.027998444593 density = 0.870927231504
ratio = 35.716269761636 contacts = 2655

© R. Drost
2014-2015

N = 1112

1112 circles in a circle

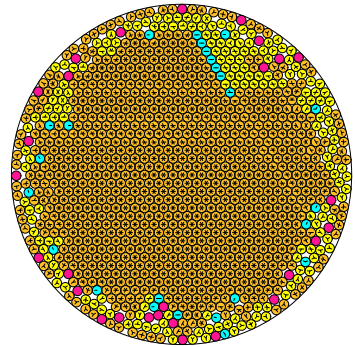


radius = 0.027953991781 density = 0.868945330021
ratio = 35.773066252332 contacts = 2805

© R. Drost
2014-2015

N = 1113

1113 circles in a circle

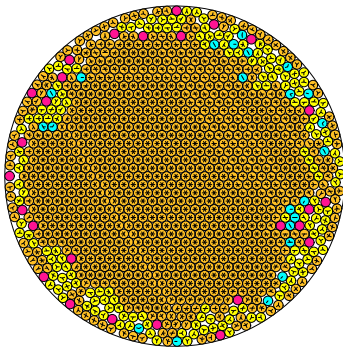


radius = 0.027941093187 density = 0.868924318267
ratio = 35.789580361678 contacts = 2702

© R. Drost
2014-2015

N = 1114

1114 circles in a circle

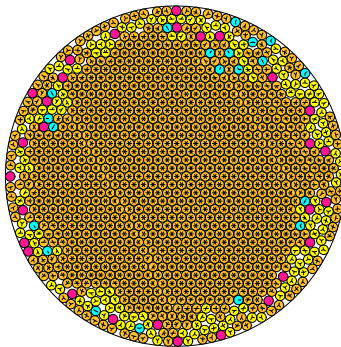


radius = 0.027925146549 density = 0.868712584087
ratio = 35.810037979740 contacts = 2704

© R. Drost
2014-2015

N = 1115

1115 circles in a circle

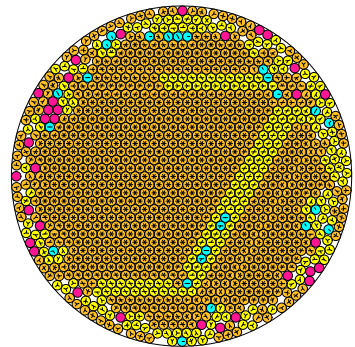


radius = 0.027919157038 density = 0.869119452648
ratio = 35.817700320542 contacts = 2776

© R. Drost
2014-2015

N = 1116

1116 circles in a circle



radius = 0.027910673627 density = 0.869370363807
ratio = 35.828587061132 contacts = 2647

© R. Drost
2014-2015